

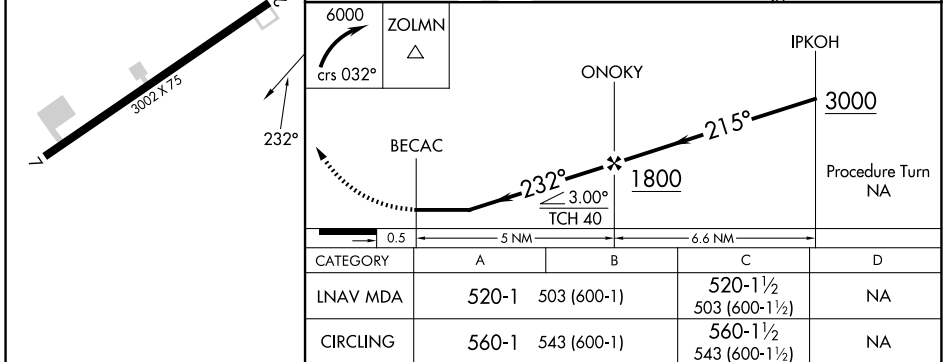
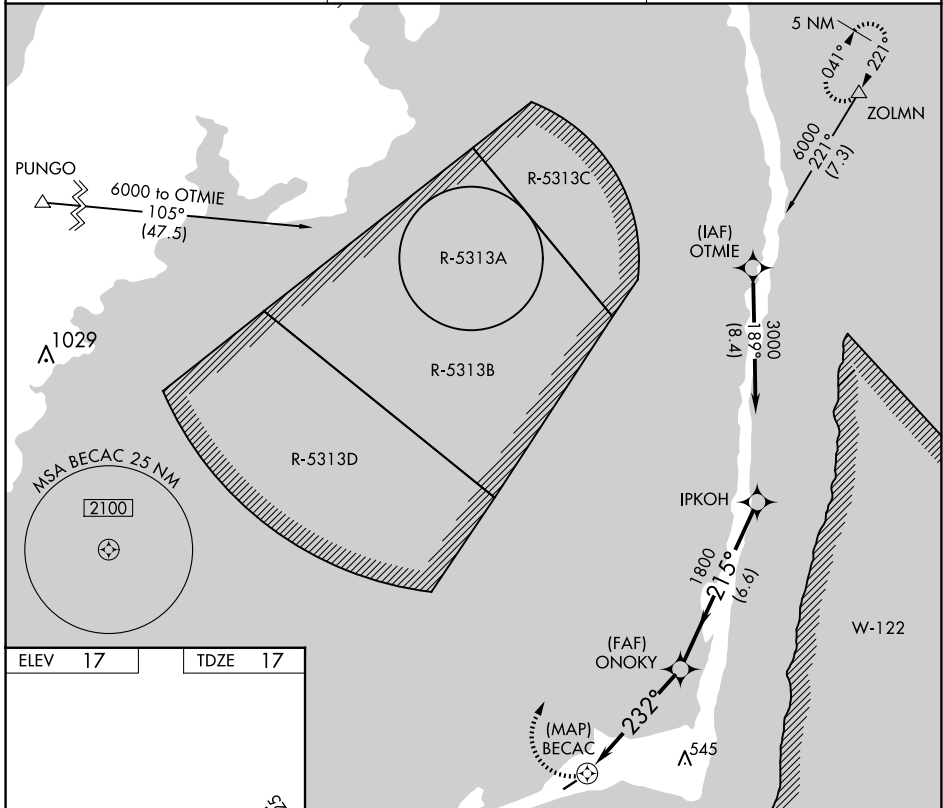
APP CRS <b>232°</b>	Rwy Idg <b>3002</b>
	TDZE <b>17</b>
	Apt Elev <b>17</b>

# RNAV (GPS) RWY 25

BILLY MITCHELL (HSE)

Procedure NA at night. GPS or RNP-0.3 required. DME/DME RNP-0.3 NA.	MISSED APPROACH: Climbing right turn to 6000 via course 032° to ZOLMN WP and hold.
---	---

ASOS <b>118.375</b>	CHERRY POINT APP CON <b>119.75 360.775</b>	CTAF <b>122.9</b>
------------------------	---	----------------------



SE-2, 16 APR 2026 to 14 MAY 2026

SE-2, 16 APR 2026 to 14 MAY 2026