

WAAS CH 45837 W14A	APP CRS 143°	Rwy Idg TDZE Apt Elev	3455 1155 1157
--	------------------------	-----------------------------	---

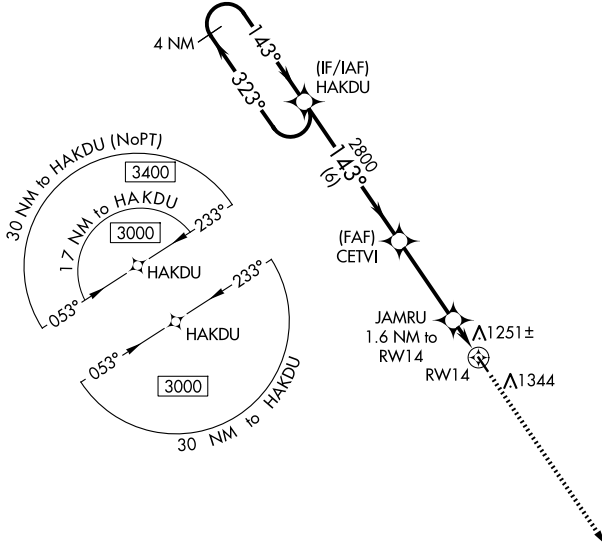
RNAV (GPS) RWY 14

CLARION MUNI (CAV)

⚠ For uncompensated Baro-VNAV systems, LNAV/VNAV NA below -17°C (2°F) or above 54°C (130°F). DME/DME RNP-0.3 NA. When local altimeter setting not received, use Fort Dodge altimeter setting and increase all DA 52 feet, all MDA 60 feet; increase LPV and LNAV/VNAV all Cats visibility 1/8 mile. Baro-VNAV and VDP NA when using Fort Dodge altimeter setting. Helicopter visibility reduction below 3/4 SM NA.

MISSED APPROACH: Climb to 3000 direct FEGNU and hold.

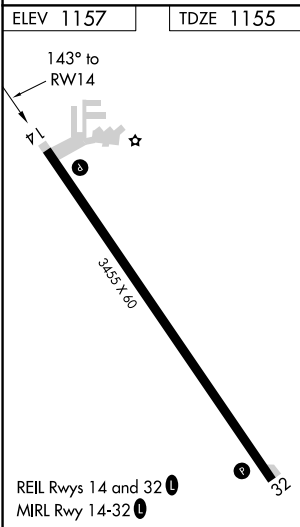
AWOS-3 126,575	MINNEAPOLIS CENTER 134.0 288.3	UNICOM 122.8 (CTAF) 0
--------------------------	--	---------------------------------



1787±A

NC-3, 16 APR 2026 to 14 MAY 2026

NC-3, 16 APR 2026 to 14 MAY 2026



4 NM Holding Pattern		HAKDU		CETVI	JAMRU	3000	FEGNU
3000 ← 323°		→ 143°		2800	1.6 NM to RWY14	↑	✧
GP 3.00°		2800		*1700		*LNAV only	
TCH 40		← 6 NM		← 3.5 NM		← 0.6 NM	
						← 1 NM	
CATEGORY	A	B	C	D			
LPV DA	1405-1	250 (300-1)			NA		
LNAV/VNAV DA	1415-1	260 (300-1)			NA		
LNAV MDA	1520-1	365 (400-1)			NA		
C CIRCLING	1680-1	523 (600-1)			NA		