

VOR OZB <b>109.0</b>	APP CRS <b>287°</b>	Rwy Idg TDZE Apt Elev <b>N/A</b> <b>N/A</b> <b>2559</b>
-------------------------	------------------------	--

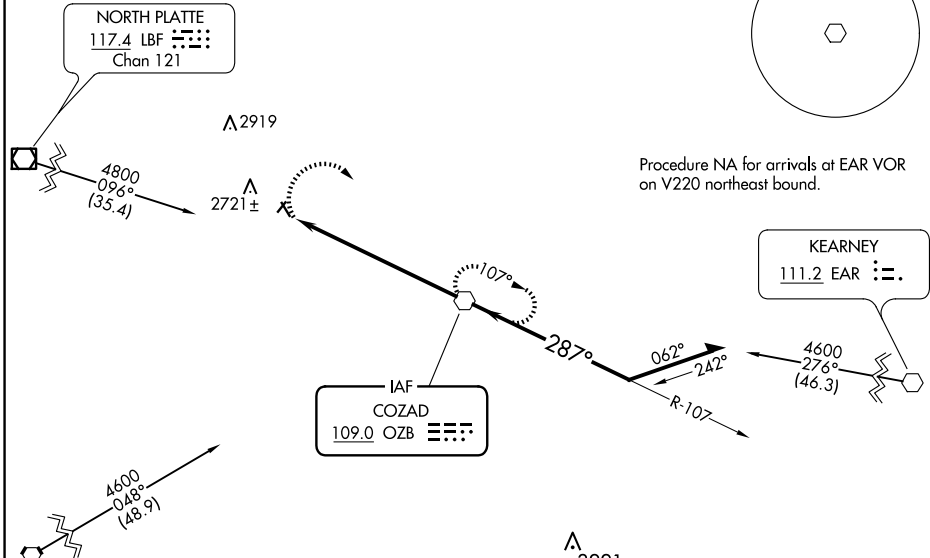
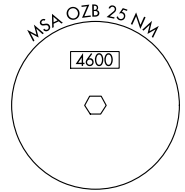
**VOR-A**  
GOTHENBURG MUNI (GTE)

**NA** Circling NA to Rwys 14 and 32. Procedure NA at night. Use Lexington altimeter setting; when not received, use North Platte altimeter setting and increase all MDA 40 feet.

**MISSED APPROACH:** Climbing right turn to 4300 direct OZB VOR and hold.

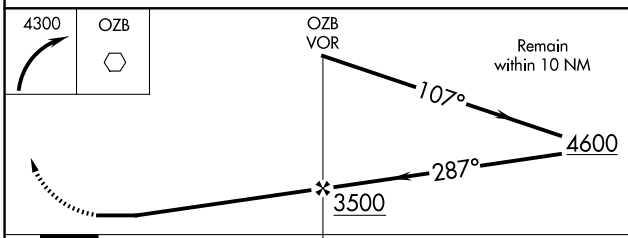
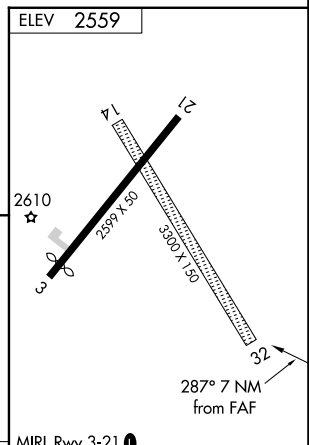
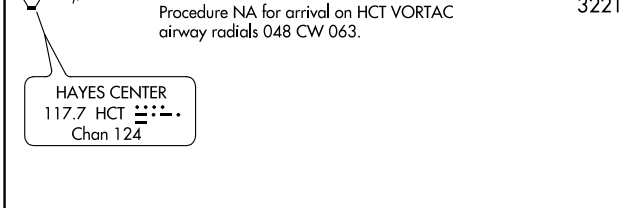
LXN AWOS-3 <b>121.025</b>	DENVER CENTER <b>132.7 226.675</b>	UNICOM <b>122.8 (CTAF)</b>
------------------------------	---------------------------------------	-------------------------------

Procedure NA for arrival on LBF VOR/DME airway radials 062 CW 080.



NC-2, 16 APR 2026 to 14 MAY 2026

NC-2, 16 APR 2026 to 14 MAY 2026



CATEGORY	A	B	C	D	FAF to MAP 7 NM					
<b>CIRCLING</b>	3120-1 561 (600-1)	3180-1 621 (700-1)	NA		Knots	60	90	120	150	180
					Min:Sec	7:00	4:40	3:30	2:48	2:20