

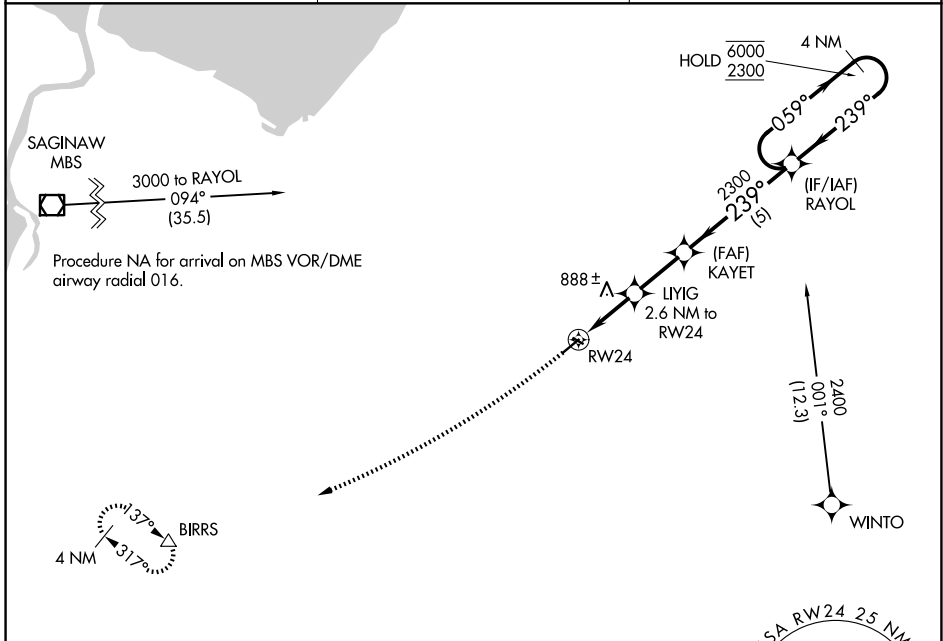
APP CRS	Rwy Ldg	4302
239°	TDZE	701
	Apt Elev	704

RNAV (GPS) RWY 24

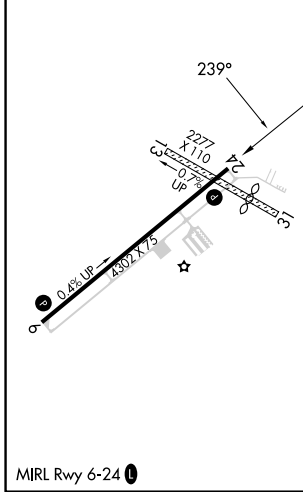
TUSCOLA AREA (CFS)

RNP APCH - GPS.	MISSED APPROACH: Climbing right turn to 3100 direct BIRRS and hold.
<p>▼ Circling NA to Rwys 13 and 31. Rwy 24 helicopter visibility reduction below 1 SM NA. Procedure NA at night.</p>	

AWOS-3P 119.275	GREAT LAKES APP CON ★ 120.95 235.625	UNICOM 123.0 (CTAF) 📞
---------------------------	--	--



ELEV 704	TDZE 701
----------	----------



	<p>3100 BIRRS △ VGSI and descent angles not coincident (VGSI Angle 3.50/TCH 48).</p>		<p>4 NM Holding Pattern</p>	
	<p>LIYIG 2.6 NM to RW24</p>	<p>KAYET 2300</p>	<p>RAYOL 059° → 6000 2300</p>	
	<p>2.6 NM</p>	<p>2.3 NM</p>	<p>5 NM</p>	
CATEGORY	A	B	C	D
LNAV MDA	1140-1	439 (500-1)	1140-1¼ 439 (500-1¼)	NA
CIRCLING	1200-1	496 (500-1)	1600-2¾ 896 (900-2¾)	NA

EC-1, 16 APR 2026 to 14 MAY 2026

EC-1, 16 APR 2026 to 14 MAY 2026