

WAAS CH 72739 W21A	APP CRS 204°	Rwy Idg 4500 TDZE 157 Apt Elev 160
--	------------------------	---

RNAV (GPS) RWY 21

WILSON INDUSTRIAL AIR CENTER (W03)

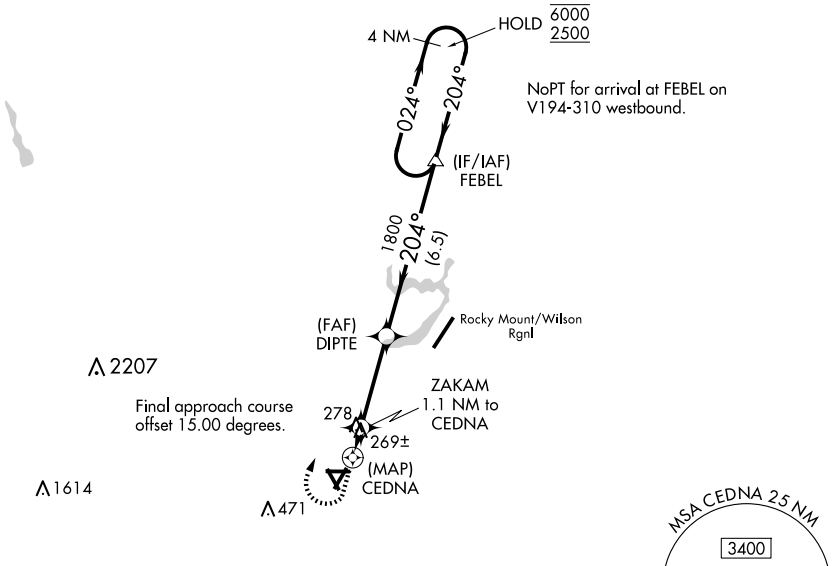
RNP APCH.

⚠ Circling Rwy 9, 15, 27, 33 NA at night. Obtain local altimeter setting on CTAF; when not received, use Rocky Mount altimeter setting and increase all MDA 20 feet; increase LP Cats C and D visibility 1/8 SM. Rwy 21 helicopter visibility reduction below 3/4 SM NA.

MISSED APPROACH: Climb to 1000, then climbing right turn to 2500 direct FEBEL and hold.

WASHINGTON CENTER
123.85 279.65

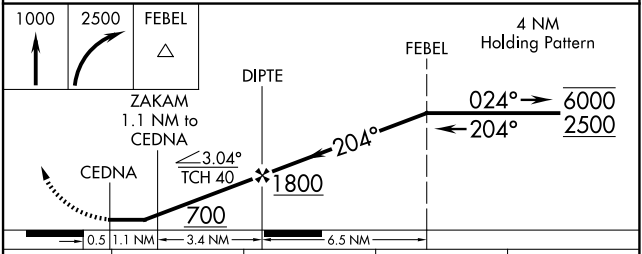
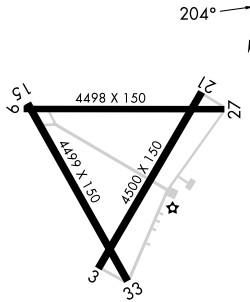
UNICOM
123.0 (CTAF) 0



SE-2, 16 APR 2026 to 14 MAY 2026

SE-2, 16 APR 2026 to 14 MAY 2026

ELEV 160	TDZE 157
----------	----------



CATEGORY	A	B	C	D
LP MDA	520-1 363 (400-1)			
LNAV MDA	540-1	383 (400-1)	540-1 1/8	383 (400-1 1/8)
C CIRCLING	660-1	500 (500-1)	780-1 3/4 620 (700-1 3/4)	780-2 620 (700-2)

REIL Rws 3 and 21 **0**
MIRL Rwy 3-21 **0**