

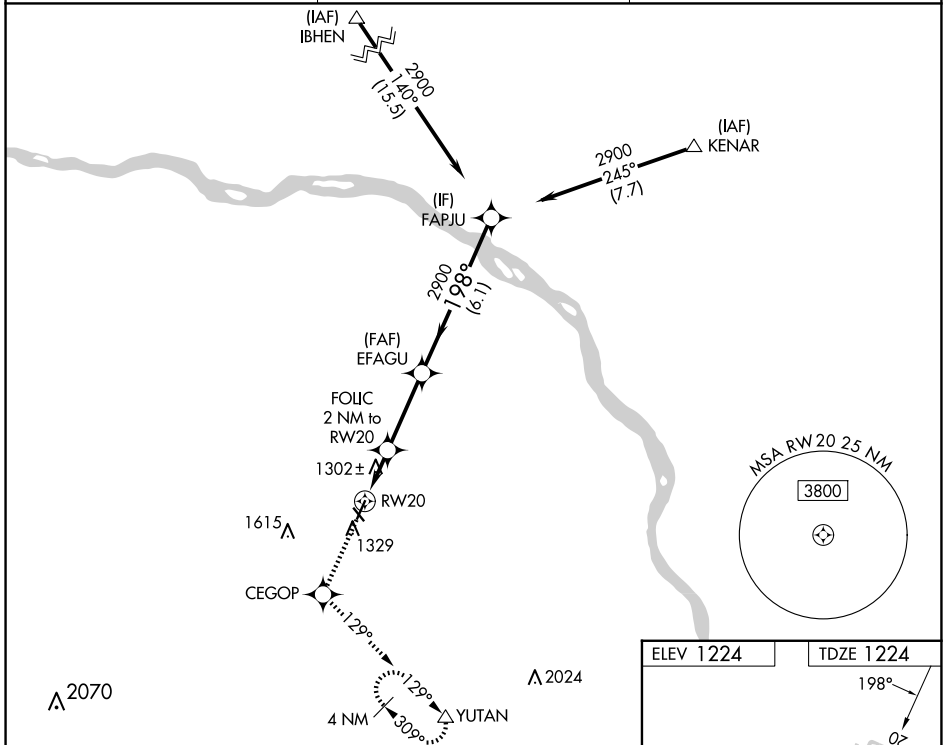
WAAS CH <b>48907</b> <b>W20A</b>	APP CRS <b>198°</b>	Rwy Idg TDZE Apt Elev	<b>4100</b> <b>1224</b> <b>1224</b>
--	------------------------	-----------------------------	---

# RNAV (GPS) RWY 20

WAHOO MUNI (AHQ)

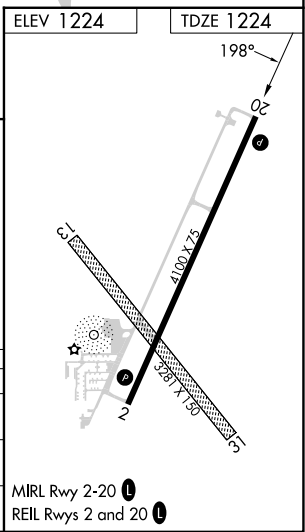
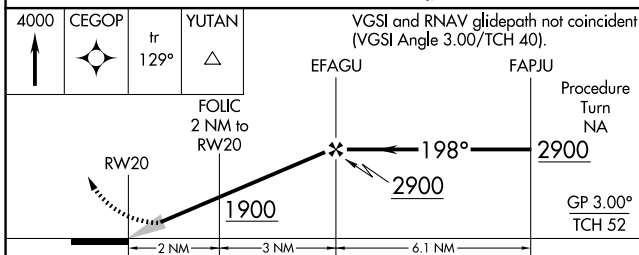
RNP APCH - GPS.	MISSED APPROACH: Climb to 4000 direct CEGOP and on track 129° to YUTAN and hold, continue climb-in-hold to 4000.
	Circling to Rwy 13-31 NA.

AWOS-3P <b>125.975</b>	OMAHA APP CON <b>135.875 354.05</b>	UNICOM <b>122.7 (CTAF) 0</b>
---------------------------	--	---------------------------------



NC-2, 16 APR 2026 to 14 MAY 2026

NC-2, 16 APR 2026 to 14 MAY 2026



4000		CEGOP	tr 129°	YUTAN	VGSI and RNAV glidepath not coincident (VGSI Angle 3.00/TCH 40).	
RW20		FOLIC 2 NM to RW20	1900	EFAGU	FAPJU	Procedure Turn NA
				2900		GP 3.00° TCH 52
		2 NM	3 NM	6.1 NM		
CATEGORY		A	B	C	D	
LPV DA		1507-1	283 (300-1)		NA	
LNAV MDA		1600-1	376 (400-1)		NA	
CIRCLING		1760-1	536 (600-1)		NA	