

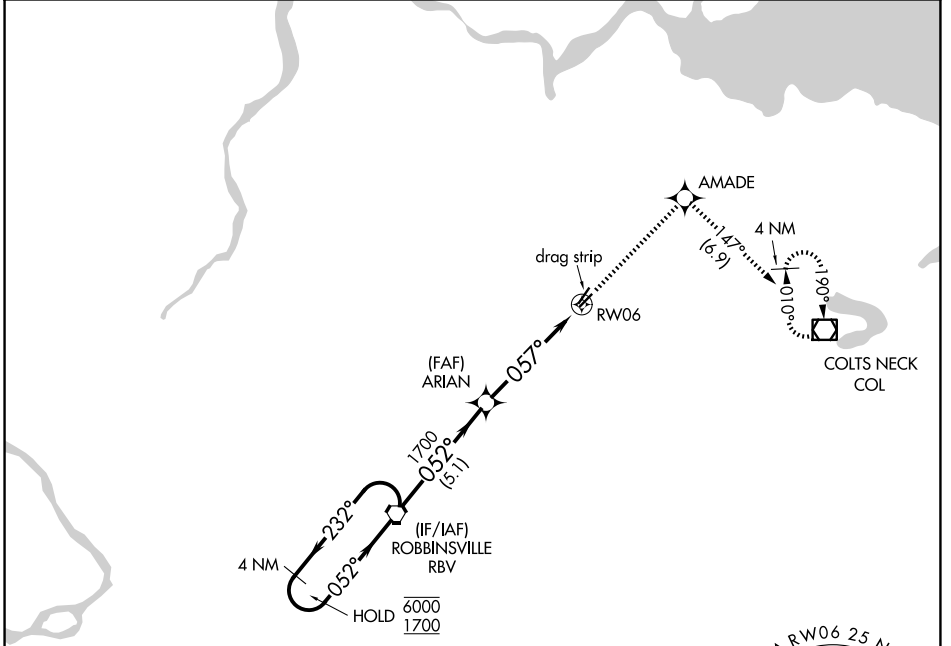
APP CRS	Rwy Ldg	2994
057°	TDZE	87
	Apt Elev	87

RNAV (GPS) RWY 6

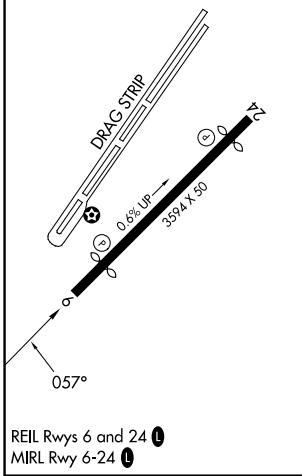
OLD BRIDGE (3N6)

RNP APCH.	<p>Procedure NA at night. Rwy 6 helicopter visibility reduction below 1 SM NA.</p> <p>Use Belmar/Farmingdale altimeter setting; when not received, use Wrightstown altimeter setting and increase all MDA 20 feet.</p>	<p>MISSED APPROACH: Climb to 2000 direct AMADE and on track 147° to COL VOR/DME and hold.</p>
-----------	--	---

BLM AWOS-3PT 121.625	MC GUIRE APP CON 126.475 363.8	GCO 121.725	UNICOM 123.075 (CTAF)
--------------------------------	--	-----------------------	---------------------------------

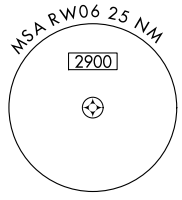


ELEV 87	TDZE 87
----------------	----------------



REIL Rwy 6 and 24 **1**
MIRL Rwy 6-24 **1**

NoPT for arrival on RBV VORTAC airway radials 238 CW 289.



Visual Segment - Obstacles.				2000	AMADE	tr 147°	COL
4 NM Holding Pattern				RBV VORTAC	ARIAN		
6000	← 232°	→ 052°	1700	057°			
				5.1 NM		4.9 NM	
CATEGORY	A	B	C	D			
LNAV MDA	660-1 573 (600-1)		NA				

NE-2, 16 APR 2026 to 14 MAY 2026

NE-2, 16 APR 2026 to 14 MAY 2026