

APP CRS	Rwy Idg	<b>3203</b>
<b>236°</b>	TDZE	<b>881</b>
	Apt Elev	<b>887</b>

# RNAV (GPS) RWY 24

ELTON HENSLEY MEML (F'TT)

RNP APCH.

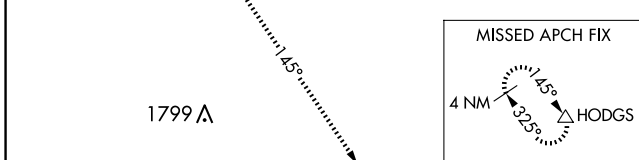
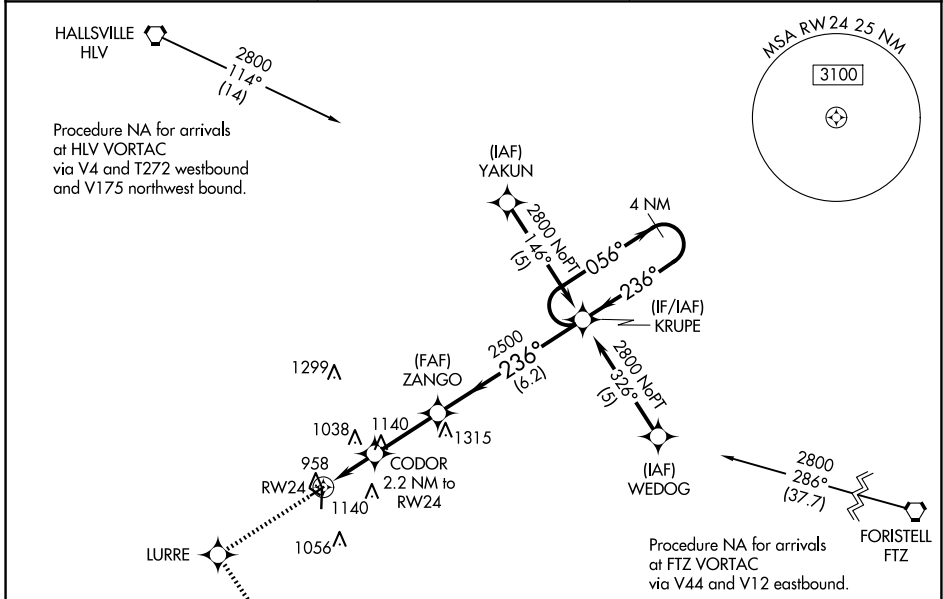
**NA** Use Columbia altimeter setting; when not received, use Jefferson City altimeter setting and increase all MDA 80 feet, and increase LNAV Cat C visibility ¼ mile. Rwy 24 helicopter visibility reduction below 1 SM NA. Circling NA to Rws 12 and 30. Straight-in Rwy 24 NA at night, Circling Rwy 18, 24 NA at night.

**MISSED APPROACH:** Climb to 2800 direct LURRE and left turn via 145° track to HODGS and hold.

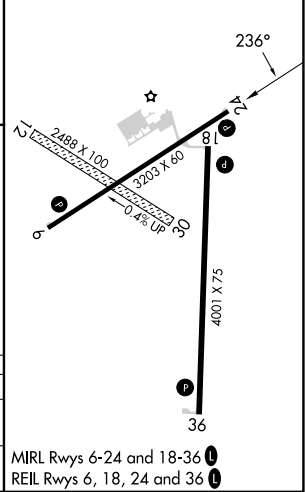
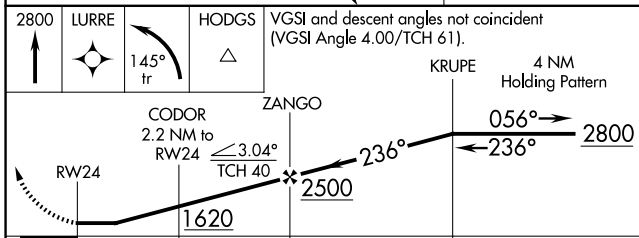
COU ASOS  
**128.45**

MIZZU APP CON  
**124.375 353.925**

UNICOM  
**122.7 (CTAF) 0**



ELEV 887	TDZE 881
----------	----------



CATEGORY	A	B	C	D
LNAV MDA	1320-1	439 (500-1)	1320-1¼ 439 (500-1¼)	NA
<b>C</b> CIRCLING	1380-1 493 (500-1)	1480-1 593 (600-1)	1560-2 673 (700-2)	NA

NC-3, 16 APR 2026 to 14 MAY 2026

NC-3, 16 APR 2026 to 14 MAY 2026