

VORTAC HLV <b>114.2</b> Chan <b>89</b>	APP CRS <b>154°</b>	Rwy Idg TDZE Apt Elev <b>887</b>	<b>N/A</b> <b>N/A</b> <b>887</b>
--	------------------------	-------------------------------------	--

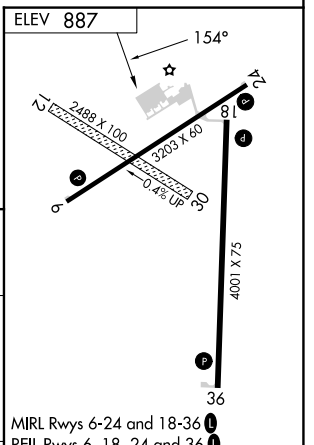
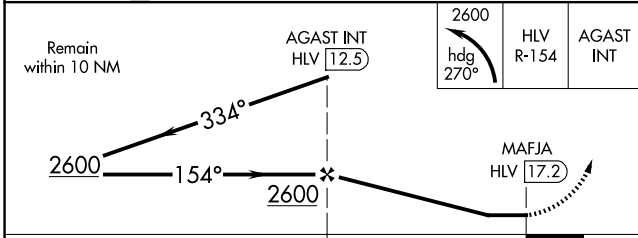
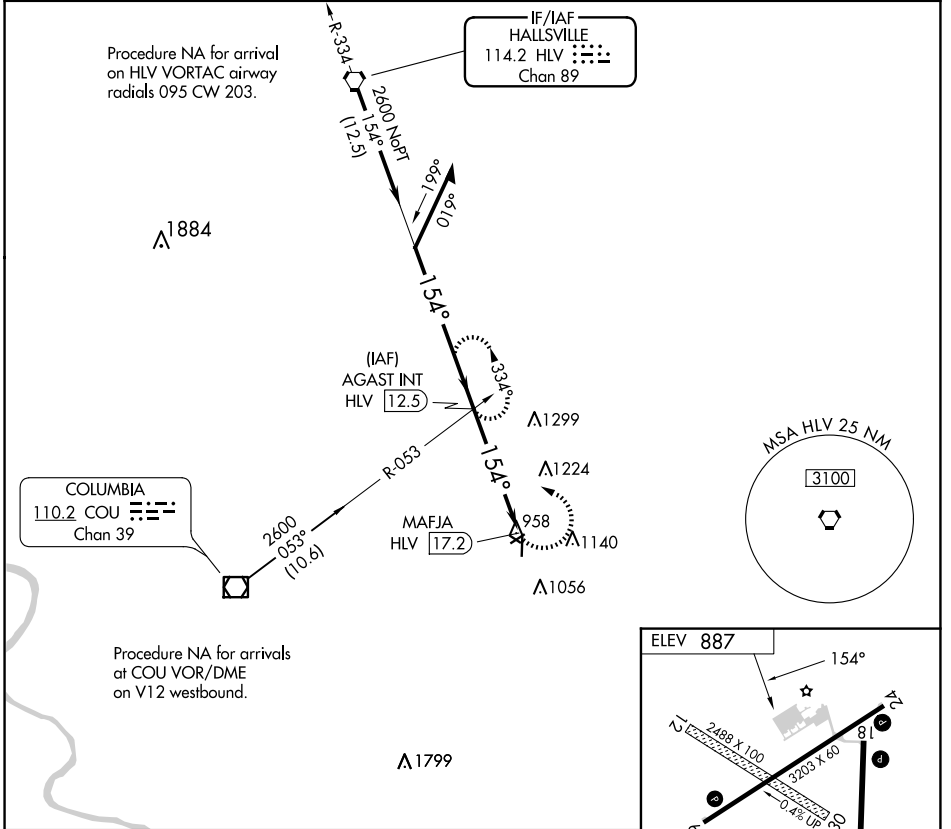
**VOR-A**

ELTON HENSLEY MEML (F'TT)

**▽** Circling NA to Rwys 12 and 30. Circling Rwy 18, 24 NA at night.  
**△** NA Use Columbia altimeter setting; when not received use Jefferson City altimeter setting and increase all MDA 80 feet, and Circling Cat C visibility ¼ SM.

MISSED APPROACH: Climbing left turn to 2600 on heading 270° and HLV VORTAC R-154 to AGAST INT/12.5 DME and hold.

COU ASOS <b>128.45</b>	MIZZU APP CON <b>124,375 353,925</b>	UNICOM <b>122.7 (CTAF)</b>
---------------------------	---	-------------------------------



CATEGORY	A	B	C	D	FAF to MAP 4.7 NM					
	1520-1	633 (700-1)	1560-2	NA	Knots	60	90	120	150	180
<b>C</b> CIRCLING					Min:Sec	4:42	3:08	2:21	1:53	1:34

**VOR-A**

NC-3, 16 APR 2026 to 14 MAY 2026

NC-3, 16 APR 2026 to 14 MAY 2026