

WAAS CH <b>82033</b> <b>W22A</b>	APP CRS <b>223°</b>	Rwy Ldg TDZE Apt Elev	<b>3895</b> <b>1003</b> <b>1008</b>
--	------------------------	-----------------------------	---

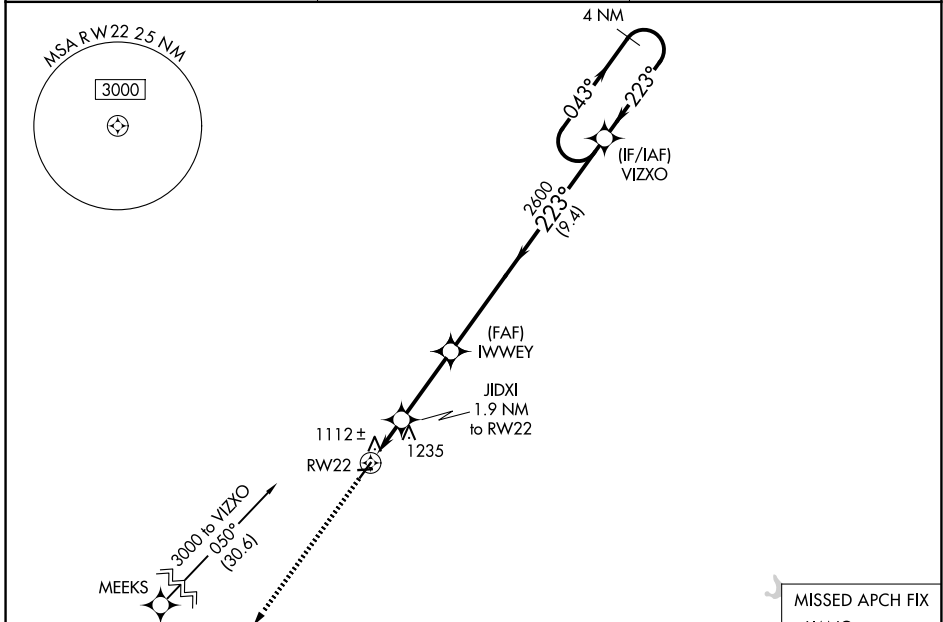
**RNAV (GPS) RWY 22**  
PORT BUCYRUS/CRAWFORD COUNTY (17G)

RNP APCH.

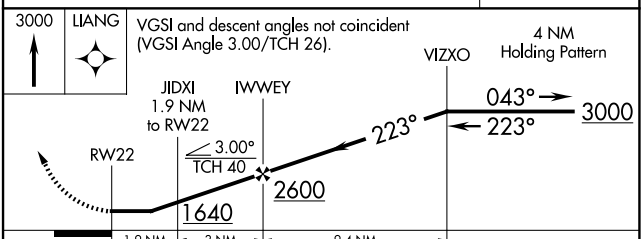
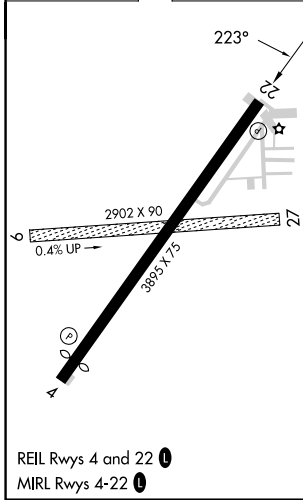
⚠ NA Circling NA to Rwy 9 and 27. Rwy 22 helicopter visibility reduction below 1 SM NA. Straight-in and Circling Rwy 22 NA at night. When local altimeter setting not received, use Mansfield altimeter setting; increase all MDA 100 feet and visibility Cat C 3/8 SM.

MISSED APPROACH: Climb to 3000 direct LIANG and hold.

AWOS-3 <b>126.625</b>	CLEVELAND APP CON ★ <b>128.35 360.65</b>	UNICOM <b>122.8 (CTAF) 0</b>
--------------------------	---	---------------------------------



ELEV 1008	TDZE 1003
-----------	-----------



CATEGORY	A	B	C	D
LP MDA	1380-1 377 (400-1)			NA
LNAV MDA	1500-1	497 (500-1)	1500-1 3/8 497 (500-1 3/8)	NA
CIRCLING	1500-1 492 (500-1)	1540-1 532 (600-1)	1700-2 692 (700-2)	NA

EC-2, 16 APR 2026 to 14 MAY 2026

EC-2, 16 APR 2026 to 14 MAY 2026