

WAAS CH <b>82330</b> <b>W29A</b>	APP CRS <b>291°</b>	Rwy Idg TDZE Apt Elev	<b>5001</b> <b>1164</b> <b>1171</b>
----------------------------------------	------------------------	-----------------------------	-------------------------------------------

# RNAV (GPS) RWY 29

IOWA COUNTY (MR.J)

RNP APCH - GPS.

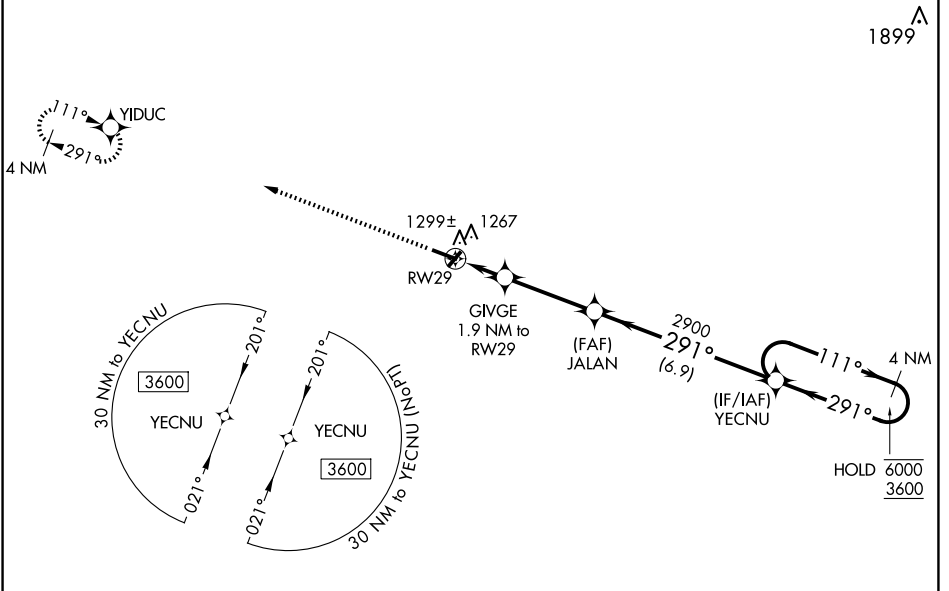
**⚠** Baro-VNAV and VDP NA when using Platteville altimeter setting. For uncompensated Baro-VNAV systems, LNAV/VNAV NA below -17°C or above 54°C. When local altimeter setting not received, use Platteville altimeter setting and increase LPV DA to 1469 feet; increase LNAV/VNAV DA to 1524 feet; increase all MDAs 60 feet and LNAV visibility Cat C ¼ SM.

**MISSED APPROACH:**  
Climb to 3500 direct YIDUC and hold.

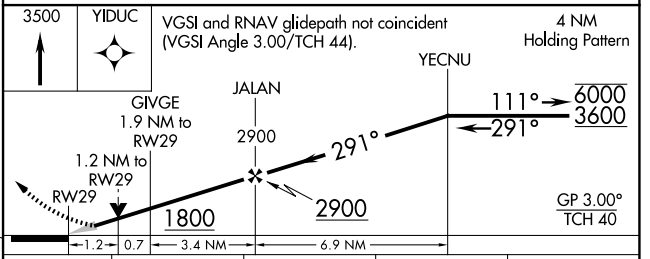
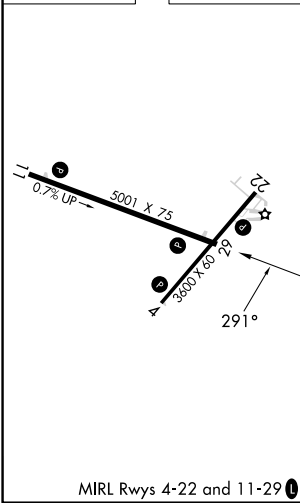
AWOS-3  
**118.525**

CHICAGO CENTER  
**133.95 281.4**

UNICOM  
**122.8 (CTAF) 0**



ELEV 1171	TDZE 1164
-----------	-----------



CATEGORY	A	B	C	D
LPV DA	1414-1	250 (300-1)		NA
LNAV/VNAV DA	1469-1	305 (300-1)		NA
LNAV MDA	1580-1	416 (500-1)	1580-1½ 416 (500-1½)	NA
CIRCLING	1620-1 449 (500-1)	1640-1 469 (500-1)	1640-1½ 469 (500-1½)	NA

EC-3, 16 APR 2026 to 14 MAY 2026

EC-3, 16 APR 2026 to 14 MAY 2026