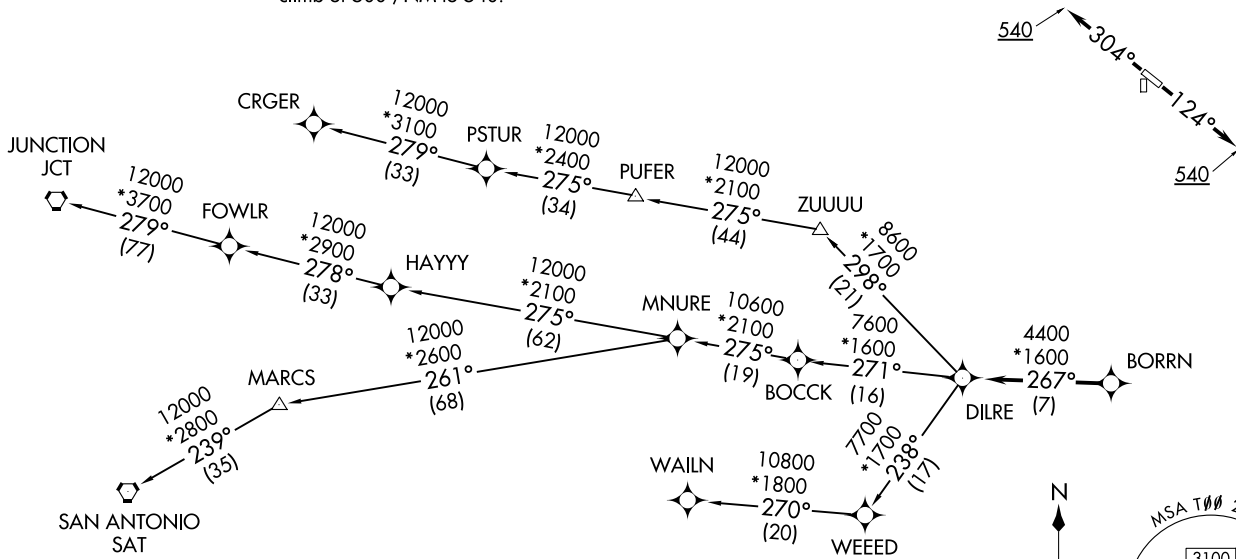


**TOP ALTITUDE:
ASSIGNED BY ATC**

RNAV 1 - DME/DME/IRU or GPS.
RADAR required.

TAKEOFF MINIMUMS
Rwys 17, 35: NA - Environmental.
Rwys 12, 30: Standard with minimum
climb of 500' /NM to 540.



NOTE: CRGER-TRANSITION ATC assigned only
for aircraft departing 54T, AXH, EFD, GLS,
HPY, IWS, LBX, LVJ, SGR, TME, T00, T41.

(CONTINUED ON FOLLOWING PAGE)

NOTE: Chart not to scale.

BORRN SIX DEPARTURE (RNAV)
(BORRN6.BORRN) 30NOV23

CHAMBERS COUNTY (T00)
ANAHUAC, TEXAS

(BORRN6.BORRN) 25051
BORRN SIX DEPARTURE (RNAV)

CHAMBERS COUNTY (T00)
ANAHUAC, TEXAS

BORRN SIX DEPARTURE (RNAV)



DEPARTURE ROUTE DESCRIPTION

TAKEOFF RUNWAY 12: Climb on heading 124° to 540, for RADAR vectors to BORRN, thence. . . .

TAKEOFF RUNWAY 30: Climb on heading 304° to 540, for RADAR vectors to BORRN, thence. . . .

. . . .on track 267° to DILRE, then on (transition). Maintain ATC assigned altitude. Expect filed altitude 10 minutes after departure.

CRGER TRANSITION (BORRN6.CRGER)

JUNCTION TRANSITION (BORRN6.JCT)

MNURE TRANSITION (BORRN6.MNURE)

SAN ANTONIO TRANSITION (BORRN6.SAT)

WAILN TRANSITION (BORRN6.WAILN)

SC-5, 16 APR 2026 to 14 MAY 2026

SC-5, 16 APR 2026 to 14 MAY 2026