

KARRR SEVEN DEPARTURE (RNAV)  
(KARRR7.KARRR) 29DECC2

CHAMBERS COUNTY (TMM)  
ANAHUAC, TEXAS

CTAF  
122.9  
HOUSTON DEP CON  
134.45 284.0

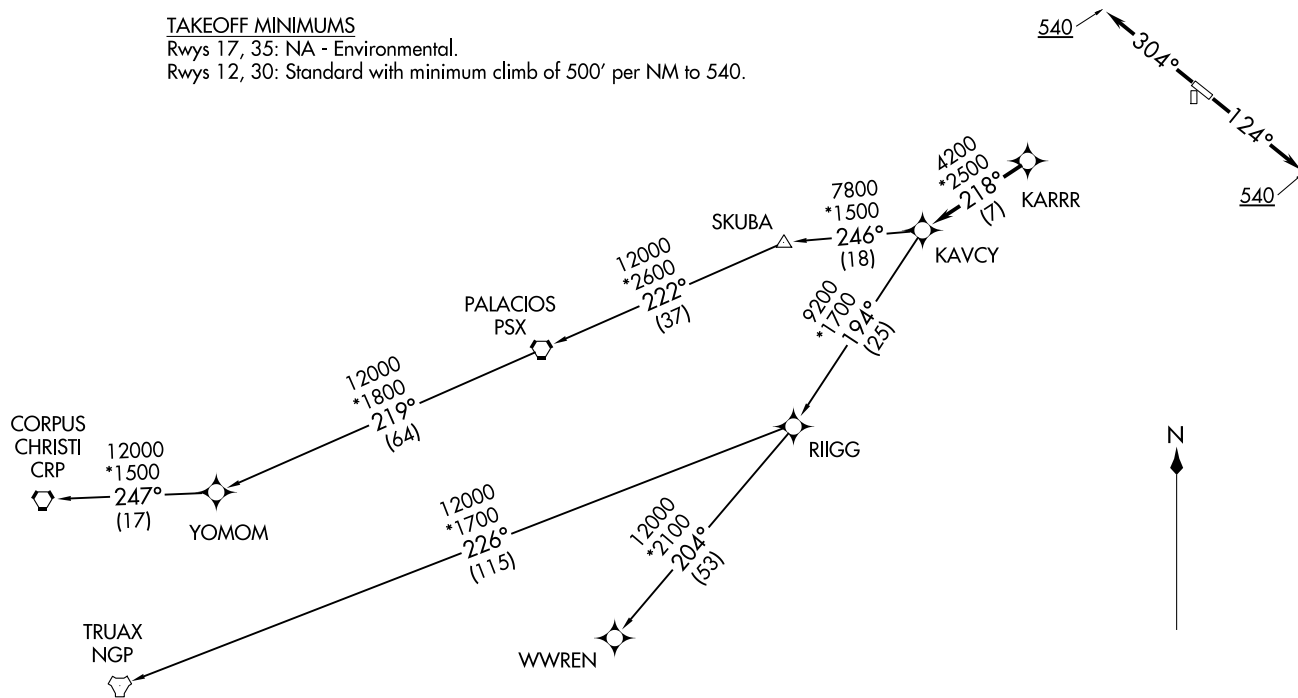
RNAV-1 DME/DME/IRU or GPS.  
RADAR required.

TOP ALTITUDE:  
ASSIGNED BY ATC

TAKEOFF MINIMUMS

Rwys 17, 35: NA - Environmental.

Rwys 12, 30: Standard with minimum climb of 500' per NM to 540.



(NARRATIVE ON FOLLOWING PAGE)

NOTE: Chart not to scale.

(KARRR7.KARRR) 22363  
KARRR SEVEN DEPARTURE (RNAV)

AL-6395 (FAA)

CHAMBERS COUNTY (TMM)  
ANAHUAC, TEXAS

# KARRR SEVEN DEPARTURE (RNAV)



## DEPARTURE ROUTE DESCRIPTION

TAKEOFF RUNWAY 12: Climb on heading 124° to 540, for RADAR vectors to KARRR, thence. . . .

TAKEOFF RUNWAY 30: Climb on heading 304° to 540, for RADAR vectors to KARRR, thence. . . .

. . . .on track 218° to KAVCY, then on (transition). Maintain ATC assigned altitude. Expect filed altitude 10 minutes after departure.

CORPUS CHRISTI TRANSITION (KARRR7.CRP)

PALACIOS TRANSITION (KARRR7.PSX)

TRUAX TRANSITION (KARRR7.NGP)

WWREN TRANSITION (KARRR7.WWREN)

YOMOM TRANSITION (KARRR7.YOMOM)

SC-5, 16 APR 2026 to 14 MAY 2026

SC-5, 16 APR 2026 to 14 MAY 2026