

STRYA EIGHT DEPARTURE (RNAV)

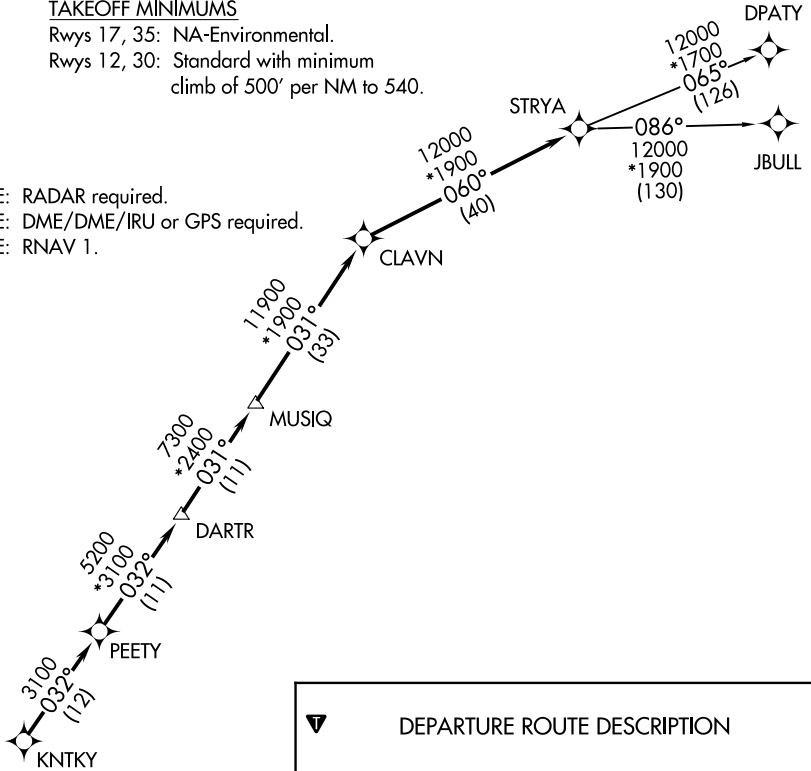
TOP ALTITUDE: ASSIGNED BY ATC

CTAF
122.9
HOUSTON DEP CON
134.45 284.0

TAKEOFF MINIMUMS

Rwys 17, 35: NA-Environmental.
Rwys 12, 30: Standard with minimum
climb of 500' per NM to 540.

NOTE: RADAR required.
NOTE: DME/DME/IRU or GPS required.
NOTE: RNAV 1.



DEPARTURE ROUTE DESCRIPTION

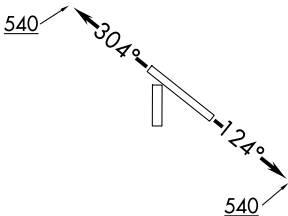
TAKEOFF RUNWAY 12: Climb on heading 124° to 540 for RADAR vectors to KNTKY, thence. . . .

TAKEOFF RUNWAY 30: Climb on heading 304° to 540 for RADAR vectors to KNTKY, thence. . . .

. . . .on track 032° to PEETY, then on track 032° to DARTR, then on track 031° to MUSIQ, then on track 031° to CLAVN, then on track 060° to STRYA, then on (transition). Maintain ATC assigned altitude. Expect filed altitude 10 minutes after departure.

DPATY TRANSITION (STRYA8.DPATY)

JBULL TRANSITION (STRYA8.JBULL)



NOTE: Chart not to scale.

SC-5, 16 APR 2026 to 14 MAY 2026

SC-5, 16 APR 2026 to 14 MAY 2026

STRYA EIGHT DEPARTURE (RNAV)

(STRYA8.STRYA) 07OCT21