

WAAS CH 62913 W36A	APP CRS 003°	Rwy Idg TDZE 117 Apt Elev 119	5002
--	------------------------	---	-------------

RNAV (GPS) RWY 36

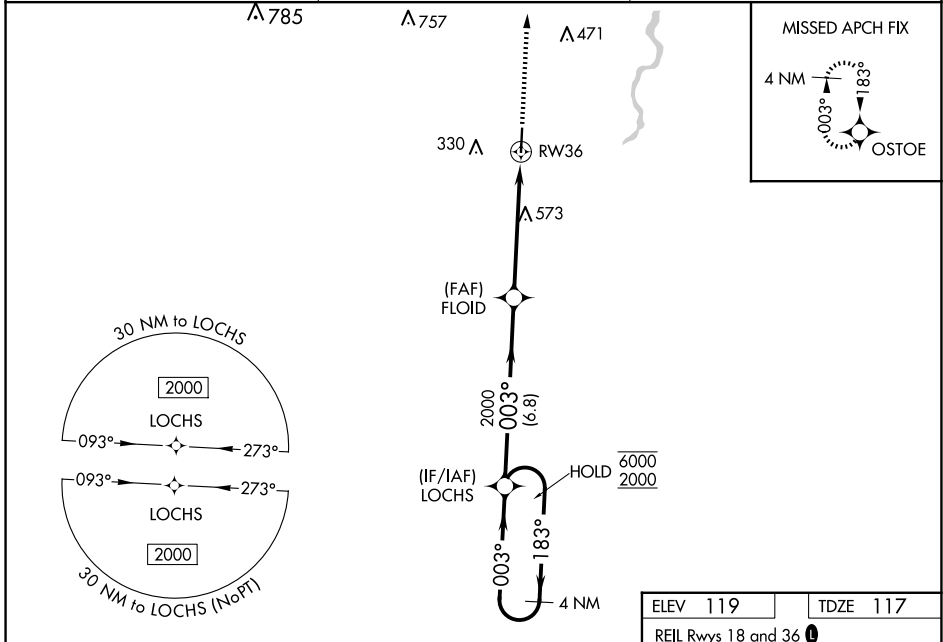
GEORGE R CARR MEML AIR FLD (BXA)

RNP APCH.

▼
▲ Rwy 36 helicopter visibility reduction below 3/4 SM NA.
For uncompensated Baro-VNAV systems, LNAV/VNAV NA below -15°C or above 54°C.

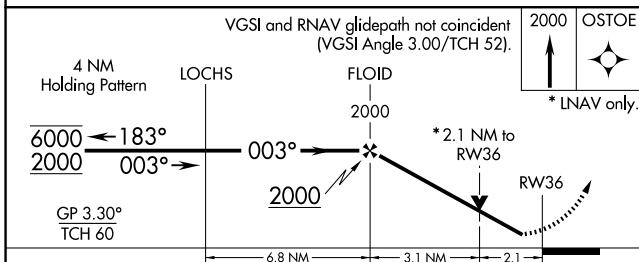
MISSED APPROACH: Climb to 2000 direct OSTOE and hold.

AWOS-3PT 118.025	HOUSTON CENTER 126.8 327.8	UNICOM 122.8 (CTAF) 0
----------------------------	--------------------------------------	---------------------------------



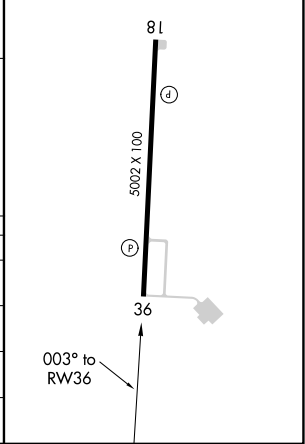
SC-4, 16 APR 2026 to 14 MAY 2026

SC-4, 16 APR 2026 to 14 MAY 2026



ELEV 119	TDZE 117
----------	----------

REIL Rwy 18 and 36 **0**
MIRL Rwy 18-36 **0**



CATEGORY	A	B	C	D
LPV DA	421-1	304 (400-1)		NA
LNAV/VNAV DA	512-1 1/8	395 (400-1 1/8)		NA
LNAV MDA	840-1	723 (800-1)	840-2 723 (800-2)	NA
CIRCLING	840-1	721 (800-1)	880-2 1/4 761 (800-2 1/4)	NA