

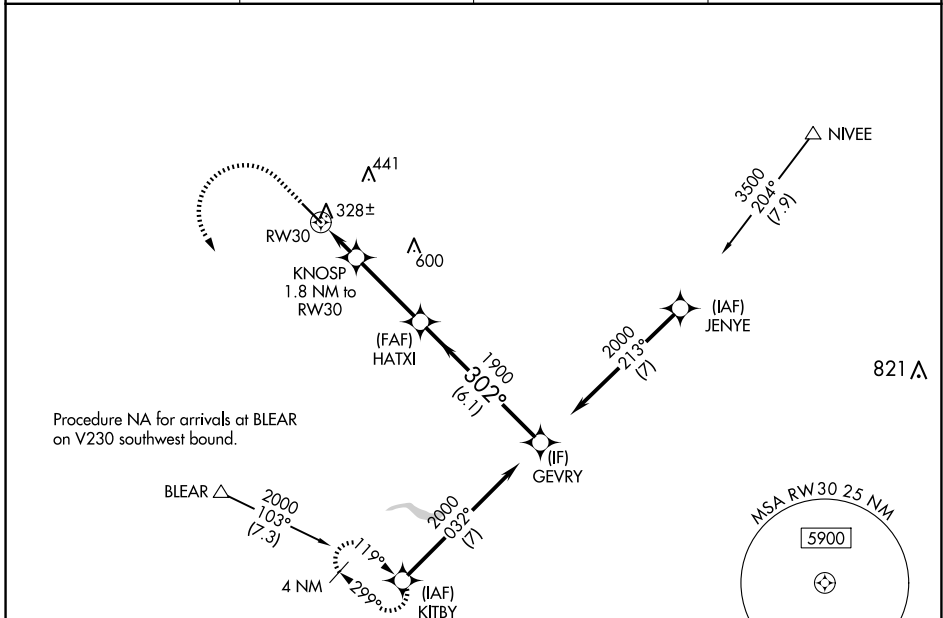
WAAS CH 90209 W30A	APP CRS 302°	Rwy Idg TDZE 255 Apt Elev 255	5545 255 255
--	------------------------	---	---

RNAV (GPS) RWY 30

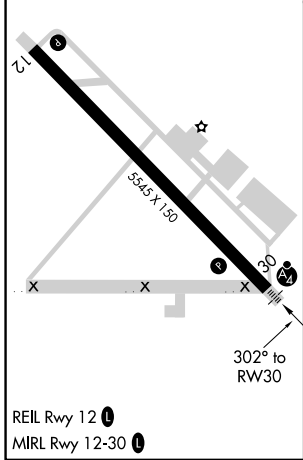
MADERA MUNI (M.A.E.)

RNP APCH - GPS.		MALSF 	MISSED APPROACH: Climb to 800 then climbing left turn to 2000 to KITBY and hold.
For uncompensated Baro-VNAV systems, LNAV/VNAV NA below -2°C or above 54°C. Inop table does not apply to LPV and LNAV/VNAV Cat A/B/C.			

ASOS 134.725	FRESNO APP CON 119.45	CINC DEL 119.45	UNICOM 122.8 (CTAF) 0
------------------------	---------------------------------	---------------------------	---------------------------------



ELEV 255	TDZE 255
----------	----------



800	2000	KITBY	VGSI and RNAV glidepath not coincident (VGSI Angle 3.00/TCH 34).	
		KNOSP 1.8 NM to RW30	HATXI 1900	GEVRY 2000
		860	302°	1900
				GP 3.00° TCH 35
CATEGORY	A	B	C	D
LPV DA	505-3/4 250 (300-3/4)			NA
LNAV/VNAV DA	505-3/4 250 (300-3/4)			NA
LNAV MDA	640-3/4	385 (400-3/4)	640-7/8 385 (400-7/8)	NA
CIRCLING	680-1 425 (500-1)	720-1 465 (500-1)	760-1 1/2 505 (600-1 1/2)	NA

SW-2, 16 APR 2026 to 14 MAY 2026

SW-2, 16 APR 2026 to 14 MAY 2026