

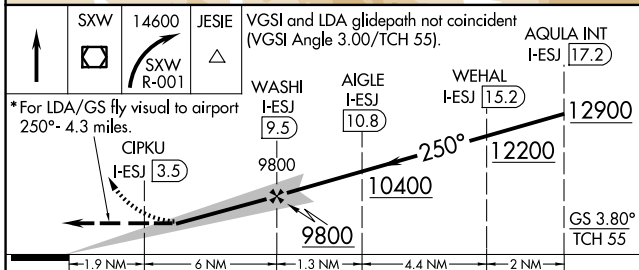
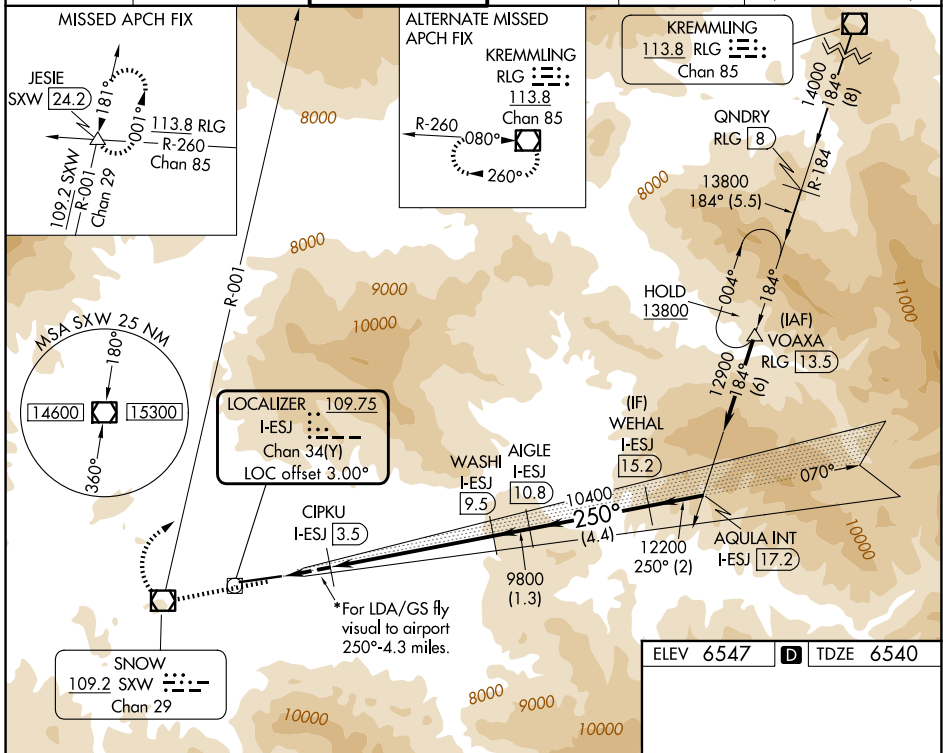
LOC/DME I-ESJ <b>109.75</b> Chan <b>34</b> (Y)	APP CRS <b>250°</b>	Rwy Ldg TDZE Apt Elev	<b>8000</b> <b>6540</b> <b>6547</b>
--	------------------------	-----------------------------	---

# LDA RWY 25

EAGLE COUNTY RGNL (EGE)

DME required.	MALSR	MISSED APPROACH: Climb direct SWX VOR/DME, cross SWX VOR/DME, then climbing right turn to 14600 on SWX VOR/DME R-001 to JESIE SWX 24.2 DME and hold, continue climb-in-hold to 14600. *Missed approach requires minimum climb of 275 feet per NM to 11700.
<p>Inoperative table does not apply.</p> <p>At night increase LDA/GS visibility to 5 SM.</p> <p>Fly visual to airport authorized during day only.</p> <p>-19°C</p>		

ATIS <b>135.575</b>	DENVER CENTER <b>128.65 282.2</b>	EAGLE TOWER ★ <b>119.8</b> (CTAF)	GND CON <b>121.8</b>	CLNC DEL <b>124.75</b>	DENVER CLNC DEL <b>124.75</b> (When tower closed)
------------------------	--------------------------------------	--------------------------------------	-------------------------	---------------------------	---



ELEV 6547	TDZE 6540
-----------	-----------

<table border="1"> <tr> <td>SWX 14600</td> <td>JESIE</td> <td>VGSI and LDA glidepath not coincident (VGSI Angle 3.00/TCH 55).</td> <td>AQUILA INT I-ESJ [17.2]</td> </tr> <tr> <td>  R-001                 </td> <td> </td> <td></td> <td></td> </tr> </table> <p>*For LDA/GS fly visual to airport 250°-4.3 miles.</p> <p>CIPKU I-ESJ [3.5]</p> <p>WASHI I-ESJ [9.5]</p> <p>AIGLE I-ESJ [10.8]</p> <p>WEHAL I-ESJ [15.2]</p> <p>AQUILA INT I-ESJ [17.2]</p> <p>12900</p> <p>12200</p> <p>10400</p> <p>9800</p> <p>9800</p> <p>250°</p> <p>GS 3.80° TCH 55</p> <p>1.9 NM 6 NM 1.3 NM 4.4 NM 2 NM</p>	SWX 14600	JESIE	VGSI and LDA glidepath not coincident (VGSI Angle 3.00/TCH 55).	AQUILA INT I-ESJ [17.2]	 R-001				 TWR 250° 0.9% UP 9000 X 150 1.0% DOWN 25°
SWX 14600	JESIE	VGSI and LDA glidepath not coincident (VGSI Angle 3.00/TCH 55).	AQUILA INT I-ESJ [17.2]						
 R-001									

CATEGORY	A	B	C	D
S-LDA/GS 25*	8330-3	1790 (1800-3)		NA
S-LDA 25	8620-2½	2080 (2100-2½)	8620-3 2080 (2100-3)	NA

HIRL Rwy 7-25   
REIL Rwy 7

SW-1, 16 APR 2026 to 14 MAY 2026

SW-1, 16 APR 2026 to 14 MAY 2026