

VAAI ONE ARRIVAL (RNAV)

AL-6403 (FAA)

EAGLE COUNTY RGNL (EGE)
EAGLE, COLORADO

SW-1, 16 APR 2026 to 14 MAY 2026

DENVER CENTER
128.65 282.2
ATIS
135.575

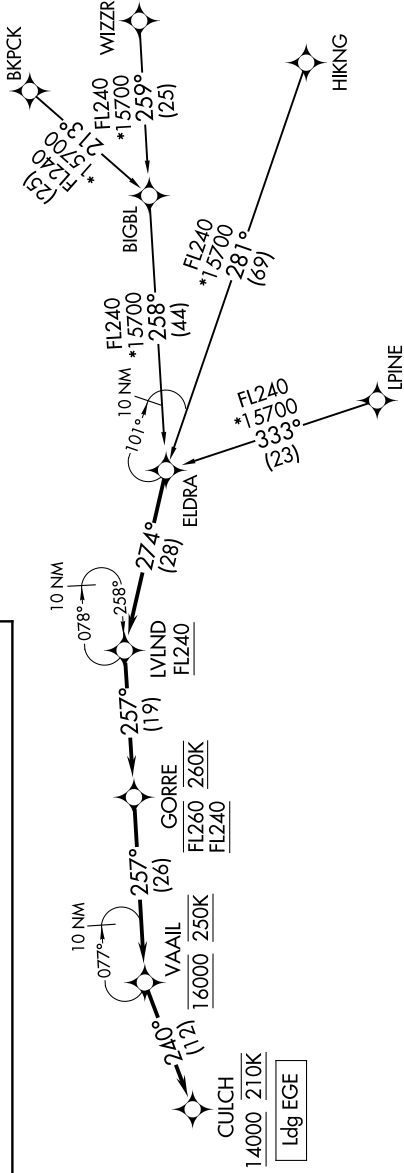
RNAV 1 - DME/DME/IRU or GPS.
RADAR required for non-GPS equipped aircraft.



ARRIVAL ROUTE DESCRIPTION

BIGBL TRANSITION (BIGBL.VAAI1)
BKPCK TRANSITION (BKPCK.VAAI1)
HIKNG TRANSITION (HIKNG.VAAI1)
LPINE TRANSITION (LPINE.VAAI1)
WIZZR TRANSITION (WIZZR.VAAI1)

From ELDRA on track 274° to cross LVLND at or above FL240, then on track 257° to cross GORRE between FL240 and FL260 and at 260K. then on track 257° to cross VAAI1 at 16000 and at 250K, then on track 240° to cross CULCH at or above 14000 and at 210K. Expect RNAV RWY 25 approach.



NOTE: Chart not to scale.

SW-1, 16 APR 2026 to 14 MAY 2026

VAAI ONE ARRIVAL (RNAV)

(ELDR.VAAI1) 17APR25

EAGLE, COLORADO
EAGLE COUNTY RGNL (EGE)