

| | | | |
|---|------------------------|---|---|
| VOR/DME BQZ 112.2 Chan 59 | APP CRS 352° | Rwy Ldg TDZE Apt Elev 6882 | N/A N/A 6882 |
|---|------------------------|---|---|

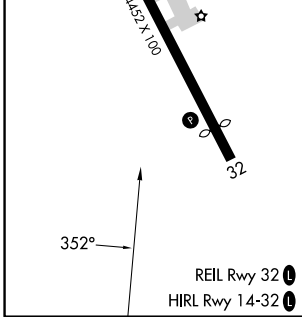
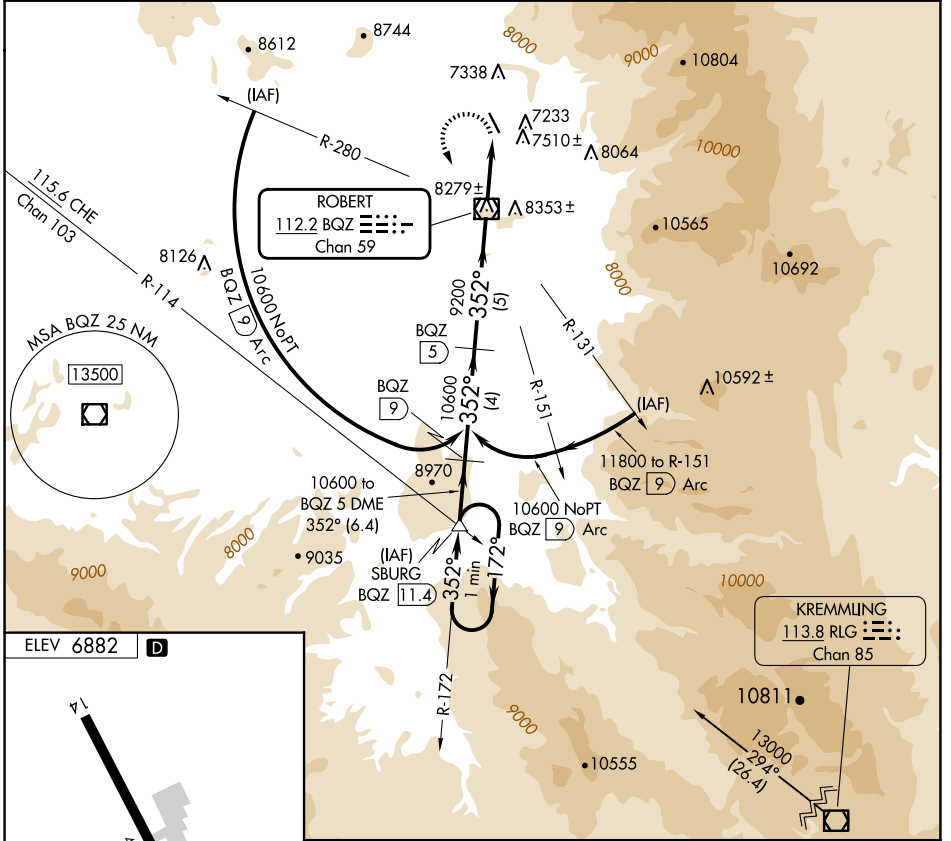
VOR/DME-C

STEAMBOAT SPRINGS/BOB ADAMS FLD (SBS)

⚠ When local altimeter setting not received, use Yampa Valley altimeter setting and increase all MDA 80 feet. Procedure NA at night. Circling NA northeast of Rwy 14-32.

MISSED APPROACH: Climbing left turn to 12100 direct BQZ VOR/DME then on BQZ VOR/DME R-172 to SBURG INT/BQZ 11.4 DME and hold.

| | | |
|--------------------------|---|---------------------------------|
| AWOS-3 118.325 | DENVER CENTER 120.475 235.975 | UNICOM 122.8 (CTAF) 0 |
|--------------------------|---|---------------------------------|



| | | | | | |
|----------------------------|---------------------------|---------------------------|------|-----------|-------|
| One Minute Holding Pattern | SBURG BQZ 11.4 | 12100 | BQZ | BQZ R-172 | SBURG |
| 12100 | 172° | 352° | 352° | 10600 | 9200 |
| | | | | | |
| CATEGORY | A | B | C | NA | D |
| CIRCLING | 8140-1¼ 1258 (1300-1¼) | 8140-1½ 1258 (1300-1½) | | | |

SW-1, 16 APR 2026 to 14 MAY 2026

SW-1, 16 APR 2026 to 14 MAY 2026