

WAAS CH <b>86922</b> <b>W03A</b>	APP CRS <b>033°</b>	Rwy Idg TDZE <b>714</b> Apt Elev <b>718</b>	<b>5001</b>
--	------------------------	---	-------------

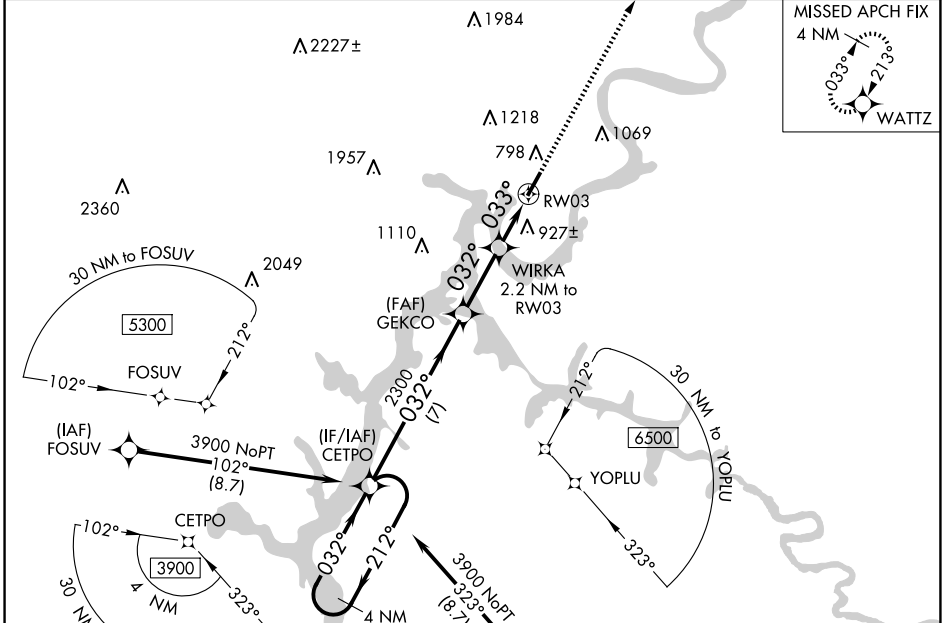
# RNAV (GPS) RWY 3

MARK ANTON (2A) (Ø)

**▽** Baro-VNAV NA when using Chattanooga altimeter setting. For uncompensated Baro-VNAV systems, LNAV/VNAV NA below -16°C (4°F) or above 39°C (102°F). DME/DME RNP-0.3 NA. VDP NA with Chattanooga altimeter setting. When VGSi inop, Circling Rwy 21 NA at night. When local altimeter setting not received, use Chattanooga altimeter setting; increase LPV DA to 1039 feet, LNAV/VNAV DA to 1288 feet, and visibility LPV and LNAV/VNAV all Cts ½ SM; increase all MDA 80 feet and visibility LNAV Cat C/D ¼ SM and Circling Cat C ½ SM. Rwy 3 helicopter visibility reduction below ¾ SM NA. Rwy 21 helicopter visibility reduction below 1 SM NA.

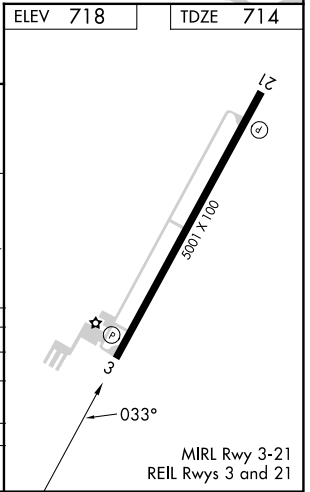
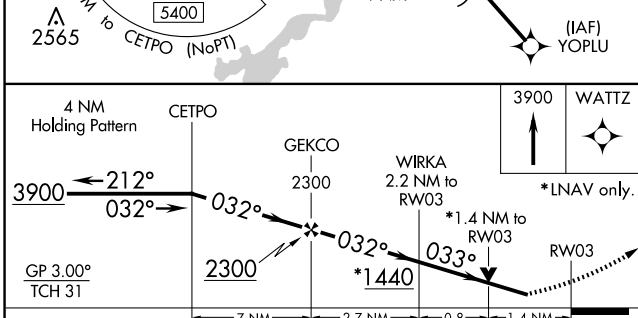
**MISSED APPROACH:**  
Climb to 3900 direct WATTZ and hold.

AWOS-3 <b>135.075</b>	CHATTANOOGA APP CON ★ <b>125.1 379.1</b>	UNICOM <b>123.0 (CTAF)</b>
--------------------------	---	-------------------------------



SE-1, 16 APR 2026 to 14 MAY 2026

SE-1, 16 APR 2026 to 14 MAY 2026



CATEGORY	A	B	C	D
LPV DA		964-7/8	250 (300-7/8)	
LNAV/VNAV DA		1213-13/4	499 (500-13/4)	
LNAV MDA	1180-1	466 (500-1)	1180-13/8	466 (500-13/8)
CIRCLING	1380-1 662 (700-1)	1420-1 702 (800-1)	1520-21/4 802 (900-21/4)	1620-3 902 (1000-3)

MIRL Rwy 3-21  
REIL Rws 3 and 21