

| | | |
|--|------------------------|---|
| WAAS CH 87024 W08A | APP CRS 083° | Rwy Ldg 3297 TDZE 879 Apt Elev 881 |
|--|------------------------|---|

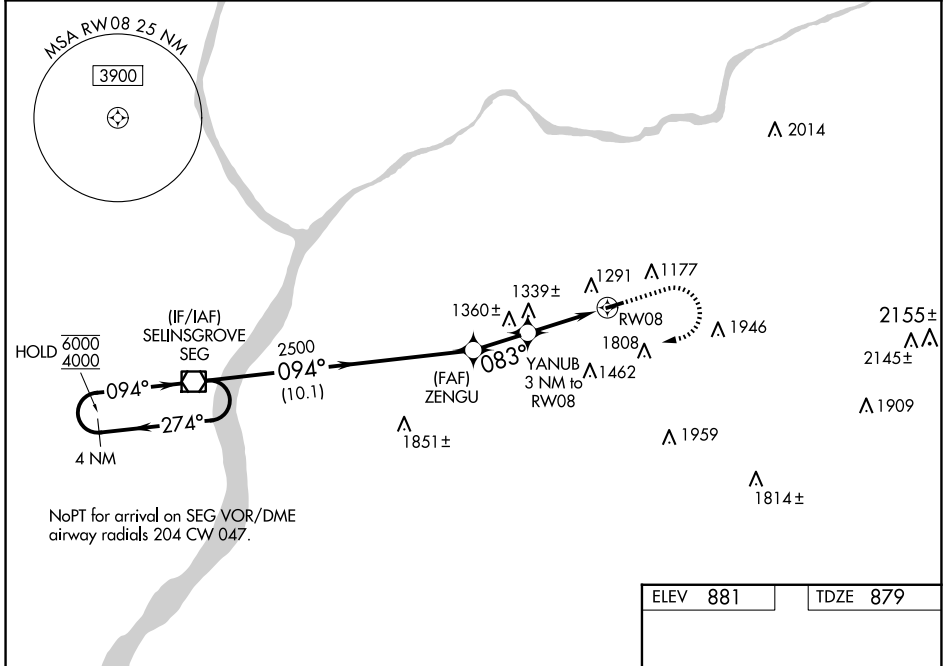
RNAV (GPS) RWY 8
NORTHUMBERLAND COUNTY (N79)

RNP APCH - GPS.

Baro-VNAV and VDP NA when using Selinsgrove altimeter setting. Rwy 8 helicopter visibility reduction below 3/4 SM NA. For uncompensated Baro-VNAV systems, LNAV/VNAV NA below -16°C or above 54°C. When local altimeter setting not received, use Selinsgrove altimeter setting and increase LPV DA to 1221 feet; increase LNAV/VNAV DA to 1695 feet and all visibilities 1/2 SM. Increase all MDAs 100 feet and LNAV visibility Cat C 1/2 SM.

MISSED APPROACH:
Climb to 2300 then climbing right turn to 4000 direct SEG VOR/DME and hold.

| | | | |
|--------------------------|--|-------------------------------|--------------|
| AWOS-3 119.175 | HARRISBURG APP CON 118.25 269.45 | UNICOM 122.8 (CTAF) | 121.8 |
|--------------------------|--|-------------------------------|--------------|



NE-4, 16 APR 2026 to 14 MAY 2026

NE-4, 16 APR 2026 to 14 MAY 2026

| | | | | | | |
|----------------------|--------------------------------|--------------------------------|-------------------------|---------------|-----------------------|----------------|
| 4 NM Holding Pattern | | SEG VOR/DME | | 2300 | 4000 | SEG |
| 6000 ← 274° | | 094° → | | ZENGU 2500 | YANUB 3 NM to RW08 | 2.2 NM to RW08 |
| 4000 | | 094° → | | | | |
| GP 3.00° TCH 40 | | 2500 | | RW08 | | |
| | | 1840 | | RW08 | | |
| | | 10.1 NM | | 2.1 NM | | 0.8 |
| | | | | | | 2.2 NM |
| CATEGORY | A | B | C | D | | |
| LPV DA | | 1129-1 | 250 (300-1) | NA | | |
| LNAV/VNAV DA | | 1603-2 | 724 (800-2) | NA | | |
| LNAV MDA | 1620-1 741 (800-1) | 1620-1 1/4 741 (800-1 1/4) | 1620-2 741 (800-2) | NA | | |
| CIRCLING | 1820-1 1/4 939 (1000-1 1/4) | 1880-1 1/2 999 (1000-1 1/2) | 2120-3 1239 (1300-3) | NA | | |

