

WAAS CH 86233 W26A	APP CRS 264°	Rwy Idg TDZE 176 Apt Elev 176	5004
--	------------------------	---	-------------

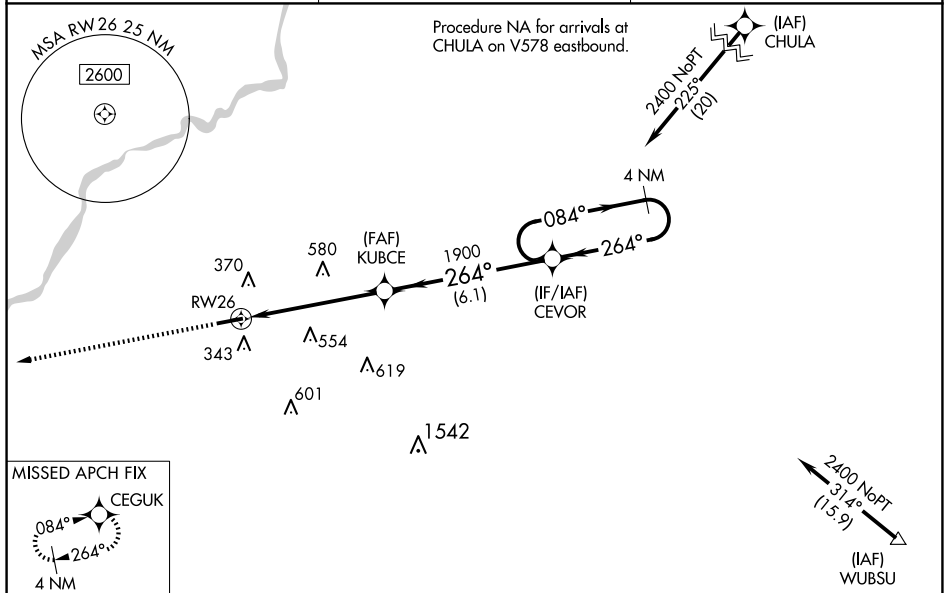
RNAV (GPS) RWY 26

CAMILLA-MITCHELL COUNTY (CXU)

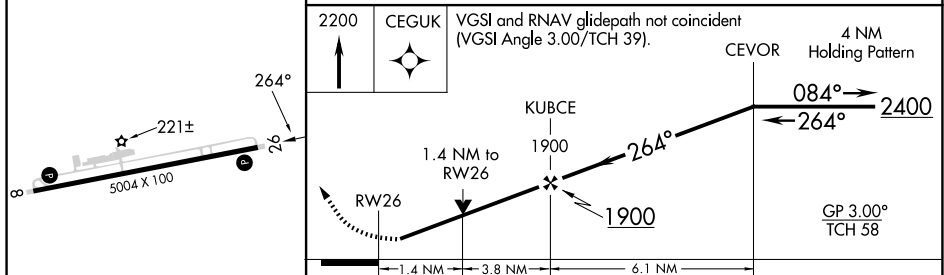
NA Baro-VNAV NA when using Albany altimeter setting. For uncompensated Baro-VNAV systems, LNAV/VNAV NA below -15°C (5°F) or above 54°C (130°F). DME/DME RNP-0.3 NA. When local altimeter setting not received, use Albany altimeter setting and increase LPV DA to 553 feet; increase LNAV/VNAV DA to 601 feet; increase all MDAs 60 feet and LNAV Cats C/D and Circling Cat D visibility ¼ SM. Rwy 26 helicopter visibility reduction below ¾ SM NA.

MISSED APPROACH:
Climb to 2200 direct CEGUK and hold.

AWOS-3T 118.675	JACKSONVILLE CENTER 125.75 363.075	UNICOM 122.8 (CTAF) 📶
----------------------------------	---	---



ELEV 176	TDZE 176
----------	----------



CATEGORY	A	B	C	D
LPV DA		505-1	329 (400-1)	
LNAV/VNAV DA		553-1¼		377 (400-1¼)
LNAV MDA	660-1	484 (500-1)	660-1¾	484 (500-1¾)
CIRCLING	720-1 544 (600-1)	760-1 584 (600-1)	920-2¼ 744 (800-2¼)	940-2½ 764 (800-2½)

REIL Rwy 8 and 26 **📶**
MIRL Rwy 8-26 **📶**