

VORTAC RMG 115.4 Chan 101	APP CRS 108°	Rwy ldg 5233 TDZE 1028 Apt Elev 1040
--	------------------------	---

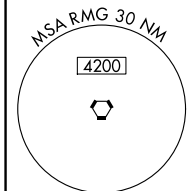
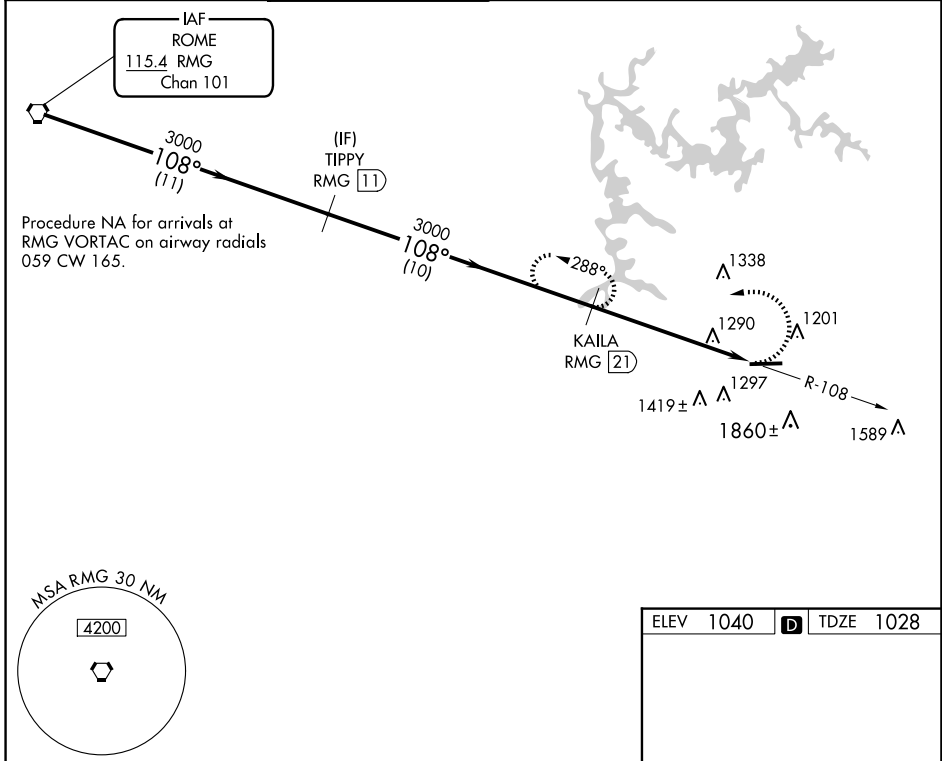
VOR/DME RWY 9

COBB COUNTY INTL/MCCOLLUM FLD (RYY)

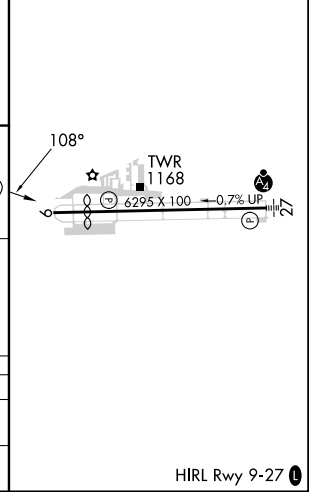
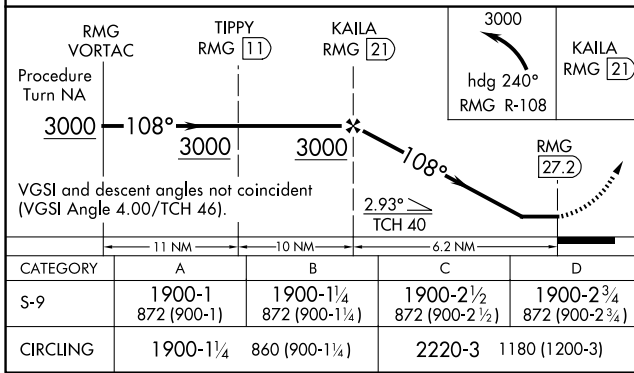
⚠ Rwy 9 helicopter visibility reduction below 1 SM NA. When local altimeter setting not received, use ATL altimeter setting and increase all MDAs 60 feet and S-9 Cat A/C/D visibilities ¼ mile.

MISSED APPROACH: Climbing left turn to 3000 via heading 240° and RMG R-108 to KAILA/21 DME and hold.

ATIS 128.125	ATLANTA APP CON 121.0 268.7	MCCOLLUM TOWER ★ 125.9 (CTAF) 0	GND CON 119.0	CLNC DEL 119.0	CLNC DEL 121.0 268.7 (When twr closed)	UNICOM 122.7
------------------------	---------------------------------------	---	-------------------------	--------------------------	---	------------------------



ELEV 1040	D TDZE 1028
-----------	--------------------



HIRL Rwy 9-27 **0**

SE-4, 16 APR 2026 to 14 MAY 2026

SE-4, 16 APR 2026 to 14 MAY 2026