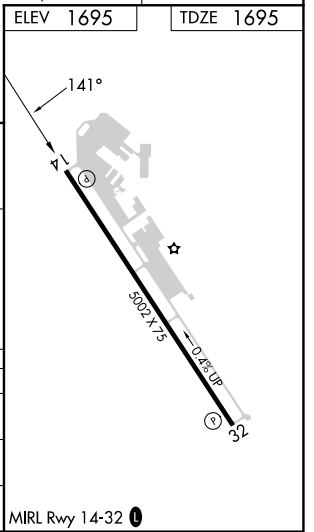
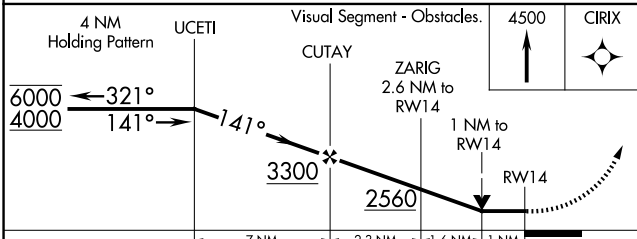
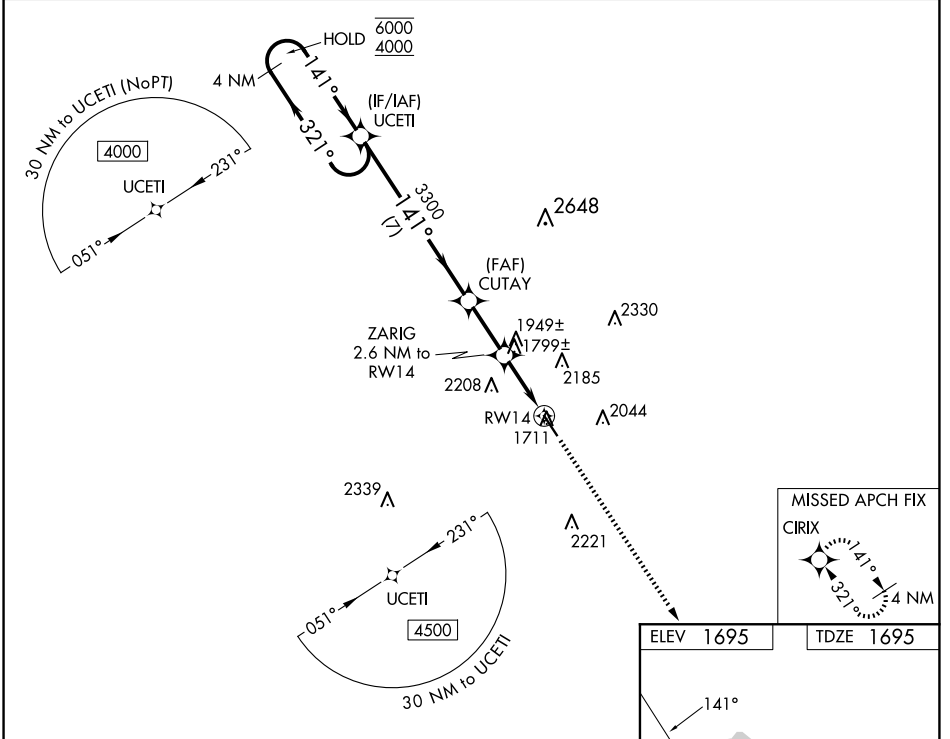


WAAS CH 78030 W14A	APP CRS 141°	Rwy Ldg 5002
		TDZE 1695
		Apt Elev 1695

RNAV (GPS) RWY 14

GILLESPIE COUNTY (T82)

RNP APCH.		MISSED APPROACH: Climb to 4500 direct CIRIX and hold.	
▼ ▲ Rwy 14 helicopter visibility reduction below ¼ SM NA.			
AWOS-3 120.0	HOUSTON CENTER 134.2 307.3	GCO 121.725	UNICOM 122.7 (CTAF) 0



CATEGORY	A	B	C	D
LP MDA	2060-1 365 (400-1)			NA
LNAV MDA	2200-1	505 (600-1)	2200-1 3/8 505 (600-1 3/8)	NA
CIRCLING	2200-1 505 (600-1)	2480-1 785 (800-1)	2520-2 1/2 825 (900-2 1/2)	NA

SC-3, 16 APR 2026 to 14 MAY 2026

SC-3, 16 APR 2026 to 14 MAY 2026