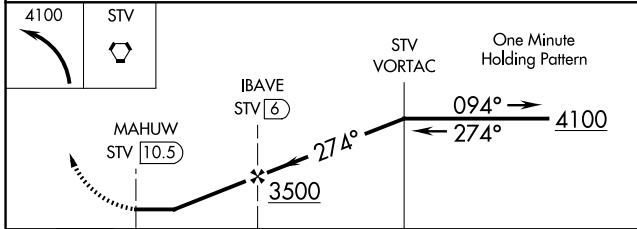
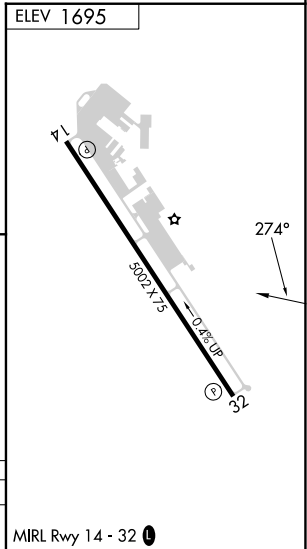
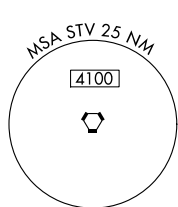
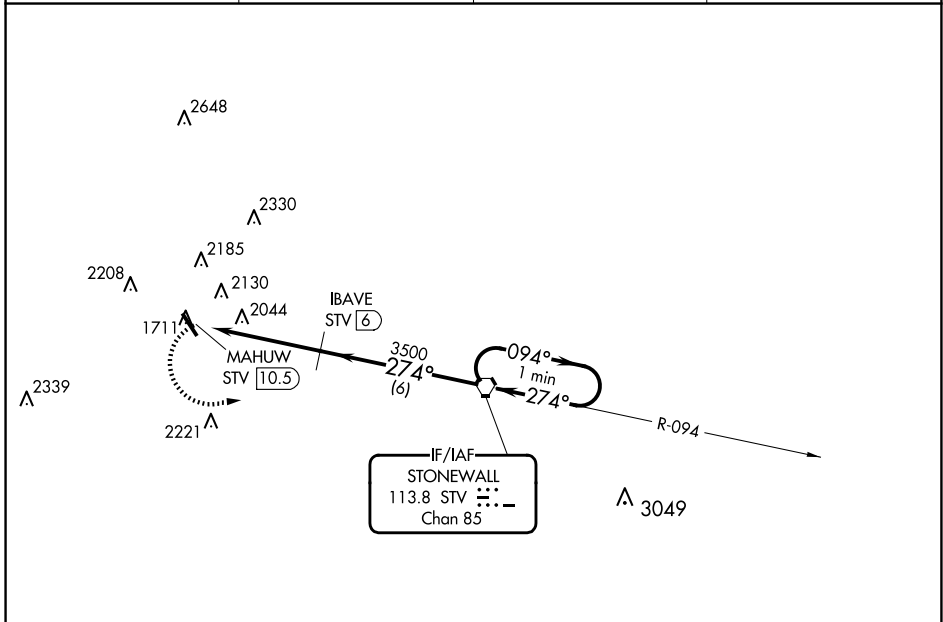


VORTAC STV <b>113.8</b> Chan <b>85</b>	APP CRS <b>274°</b>	Rwy Ldg TDZE Apt Elev <b>1695</b>	N/A N/A 1695
--	------------------------	--------------------------------------	--------------------

**VOR/DME-A**  
GILLESPIE COUNTY (T82)

<b>▼</b> <b>▲</b>	When local altimeter setting not received, use Kerrville altimeter setting and increase MDA 60 feet and Cat C visibility ¼ mile.	MISSED APPROACH: Climbing left turn to 4100 direct STV VORTAC and hold.
----------------------	--	---

AWOS-3 <b>120.0</b>	HOUSTON CENTER <b>134.2 307.3</b>	GCO <b>121.725</b>	UNICOM <b>122.7</b> (CTAF) <b>①</b>
------------------------	--------------------------------------	-----------------------	--



CATEGORY	A	B	C	D
CIRCLING	2440-1 745 (800-1)	2440-1¼ 745 (800-1¼)	2520-2½ 825 (900-2½)	NA

SC-3, 16 APR 2026 to 14 MAY 2026

SC-3, 16 APR 2026 to 14 MAY 2026