

APP CRS **194°**  
 Rwy Idg **6001**  
 TDZE **3701**  
 Apt Elev **3706**

**RNAV (GPS) RWY 19**  
 MOORE COUNTY (DUX)

RNP APCH - GPS.

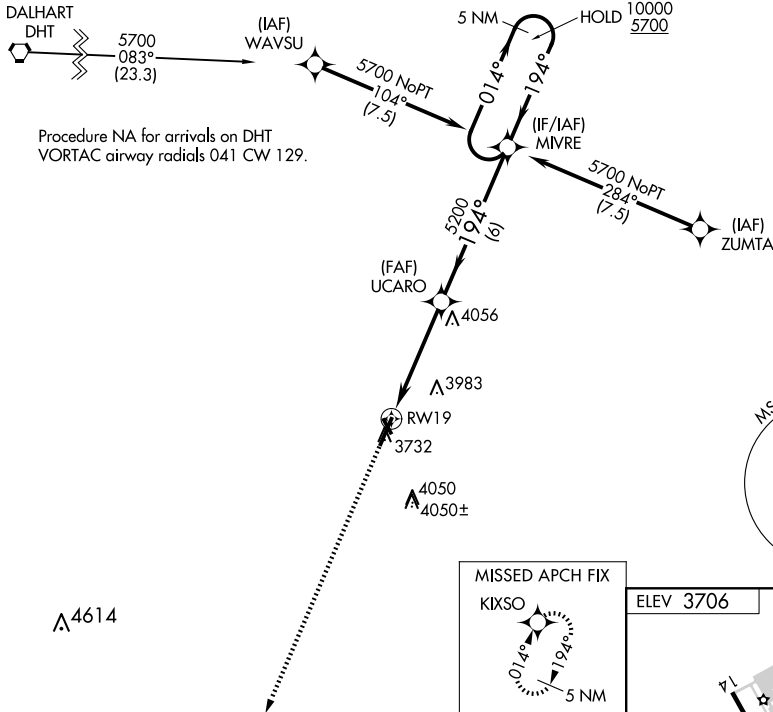
**▼** Circling Rwy 14, 32 NA at night.  
**▲** Rwy 19 helicopter visibility reduction below 3/4 SM NA.

MISSED APPROACH: Climb to 5700 direct KIXSO and hold.

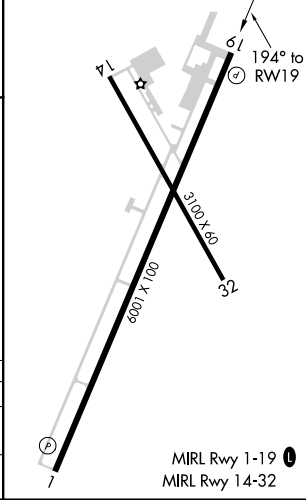
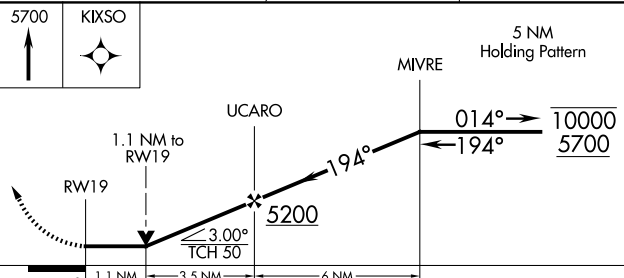
AWOS-3  
**118.075**

ALBUQUERQUE CENTER  
**127.85 285.475**

UNICOM  
**122.8 (CTAF) 0**



ELEV 3706 | TDZE 3701



CATEGORY	A	B	C	D
LNVA MDA	4100-1	399 (400-1)	4100-1 1/8	399 (400-1 1/8)
<b>☐</b> CIRCLING	4100-1 394 (400-1)	4300-1 594 (600-1)	4400-2 694 (700-2)	4400-2 1/4 694 (700-2 1/4)

SC-2, 16 APR 2026 to 14 MAY 2026

SC-2, 16 APR 2026 to 14 MAY 2026