

APP CRS	Rwy Ldg	<b>4001</b>
<b>286°</b>	TDZE	<b>683</b>
	Apt Elev	<b>683</b>

# RNAV (GPS) RWY 28

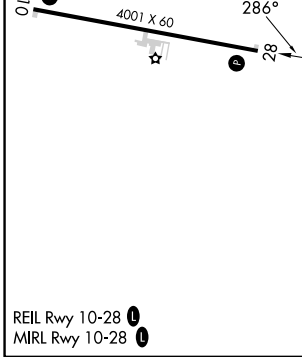
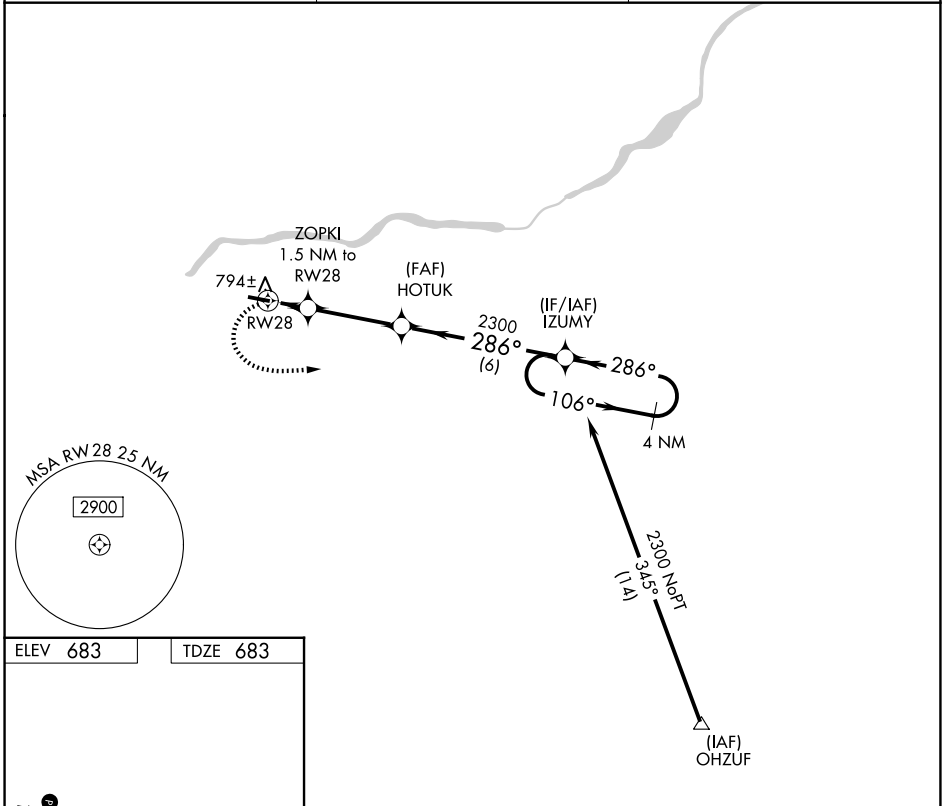
HENRY COUNTY (7W5)

RNP APCH.

- ▼** Rwy 28 helicopter visibility reduction below 3/4 SM NA.
- ▲ NA** Circling Rwy 10 NA at night. Use Toledo Express altimeter setting. When not received, procedure NA.

MISSED APPROACH: Climbing left turn to 2300 direct IZUMY and hold.

TOL ASOS <b>118.75 290.225</b>	TOLEDO APP CON <b>134.35 307.0</b>	UNICOM <b>123.0 (CTAF) 0</b>
-----------------------------------	---------------------------------------	---------------------------------



ELEV 683	TDZE 683	2300 IZUMY	VGSi and descent angles not coincident (VGSi Angle 3.00/TCH 25).		4 NM Holding Pattern
		HOTUK		IZUMY	
		1.5 NM	3.4 NM	6 NM	
CATEGORY	A	B	C	D	
LNAV MDA	1100-1	417 (500-1)	1100-1 1/8 417 (500-1 1/8)	NA	
CIRCLING	1220-1	537 (600-1)	1400-2 717 (800-2)	NA	

EC-2, 16 APR 2026 to 14 MAY 2026

EC-2, 16 APR 2026 to 14 MAY 2026