

(CHOIR3.CHOIR) 24305

# CHOIR THREE DEPARTURE (RNAV)

AL-6436 (FAA)

ALTURAS MUNI (AAT)  
ALTURAS, CALIFORNIA

**TOP ALTITUDE:  
ASSIGNED BY ATC**

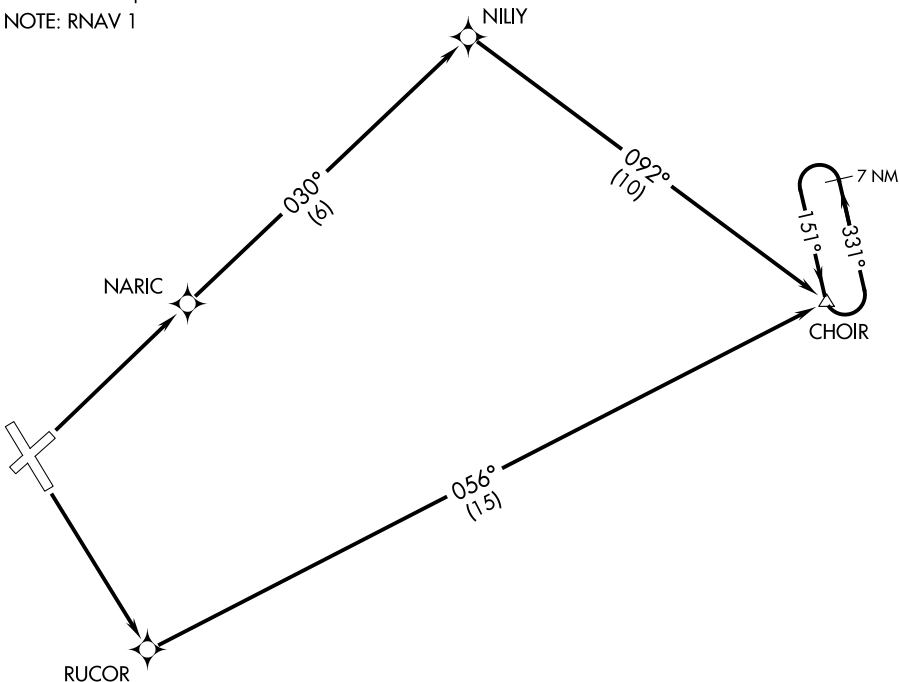
SEATTLE CENTER  
127.6 346.35  
CTAF 122.8

### TAKEOFF MINIMUMS

Rwy 3: Standard with minimum climb of 367' per NM to 11000.  
Rwy 13: Standard with minimum climb of 389' per NM to 11000.  
Rwys 21 and 31: NA - ATC.

NOTE: GPS required.

NOTE: RNAV 1



NOTE: Chart not to scale.



### DEPARTURE ROUTE DESCRIPTION

TAKEOFF RUNWAY 3: Climb to 11000 direct NARIC and via 030° track to NILIY and via 092° track to CHOIR, thence....

TAKEOFF RUNWAY 13: Climb to 11000 direct RUCOR and via 056° track to CHOIR, thence....

....climb in holding, (if required) before proceeding on course.

# CHOIR THREE DEPARTURE (RNAV)

(CHOIR3.CHOIR) 15SEP16

ALTURAS, CALIFORNIA  
ALTURAS MUNI (AAT)

SW-2, 16 APR 2026 to 14 MAY 2026

SW-2, 16 APR 2026 to 14 MAY 2026