

APP CRS	Rwy Idg	4504
332°	TDZE	269
	Apt Elev	269

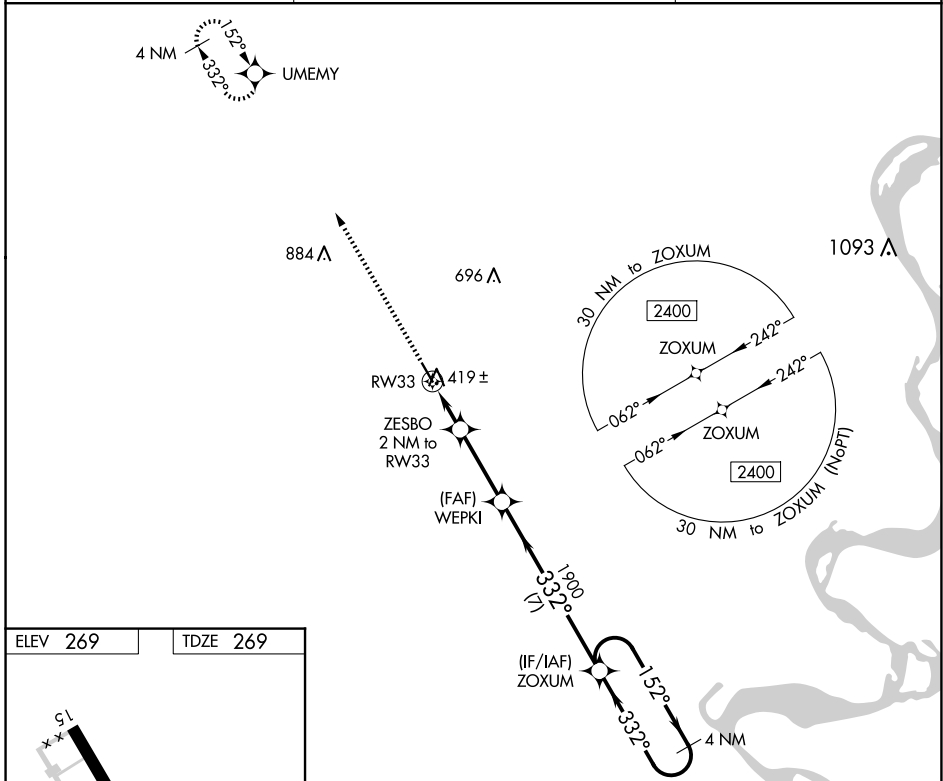
RNAV (GPS) RWY 33

GIDEON MEML (M85)

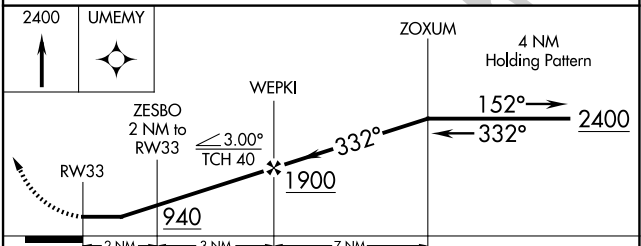
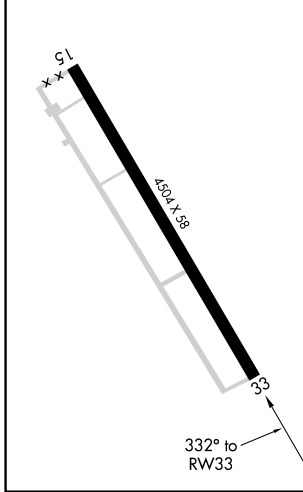
NA DME/DME RNP-0.3 NA. Procedure NA at night. Helicopter visibility reduction below 1 SM NA. Obtain Arkansas Intl altimeter setting on CTAF (122.7), when not received, use Poplar Bluff altimeter setting and increase all MDA 20 feet and Circling Cat C visibility ¼ mile.

MISSED APPROACH: Climb to 2400 direct UMEMY and hold.

BYH CTAF 122.7	MEMPHIS CENTER 133.65 292.15	CTAF 122.9
--------------------------	--	----------------------



ELEV 269	TDZE 269
----------	----------



CATEGORY	A	B	C	D
LNAV MDA	740-1	471 (500-1)	740-1 3/8 471 (500-1 3/8)	NA
CIRCLING	860-1	591 (600-1)	900-1 3/4 631 (700-1 3/4)	NA

NC-3, 16 APR 2026 to 14 MAY 2026

NC-3, 16 APR 2026 to 14 MAY 2026