

APP CRS	Rwy Idg	N/A
287°	TDZE	N/A
	Apt Elev	304

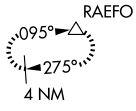
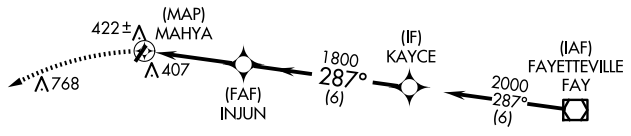
RNAV (GPS)-A

P K AIRPARK (5W4)

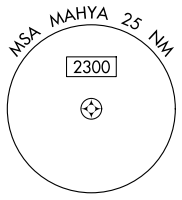
<p>▽ DME/DME RNP-0.3 NA. Procedure NA at night. Use Fayetteville altimeter setting.</p>	<p>MISSED APPROACH: Climbing left turn to 3000 direct RAEFO and hold.</p>
<p>FAYETTEVILLE APP CON 127.8 290.25</p>	<p>UNICOM 123.0 (CTAF)</p>

SE-2, 16 APR 2026 to 14 MAY 2026

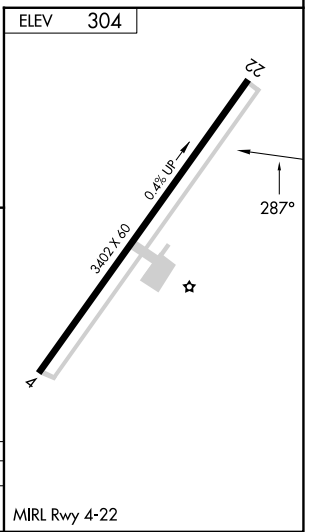
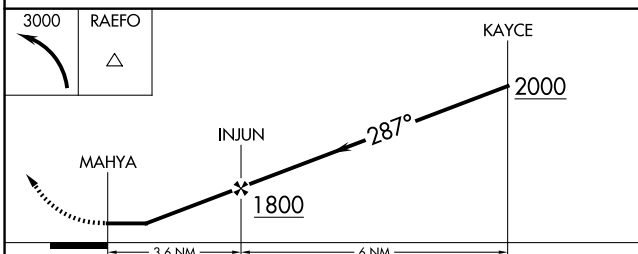
SE-2, 16 APR 2026 to 14 MAY 2026



Procedure NA for arrival on FAY VOR/DME airway radials 225 CW 009.



1249 **△**



CATEGORY	A	B	C	D
☐ CIRCLING	840-1 536 (600-1)	860-1 556 (600-1)	920-1¾ 616 (700-1¾)	NA

MIRL Rwy 4-22