

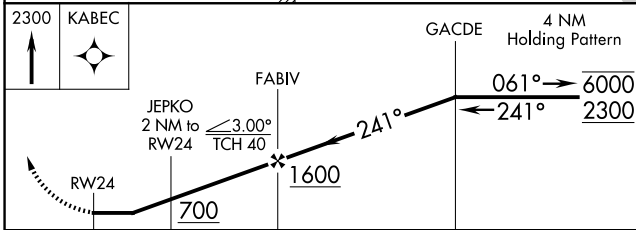
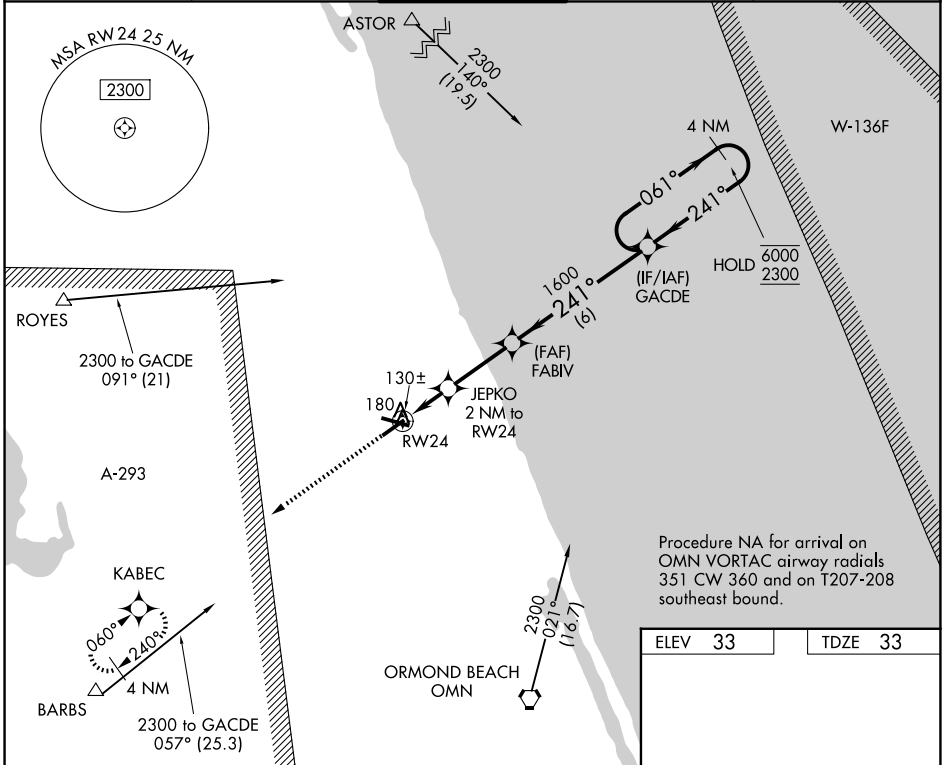
WAAS CH <b>86742</b> W <b>24A</b>	APP CRS <b>241°</b>	Rwy Ldg TDZE Apt Elev	<b>5001</b> <b>33</b> <b>33</b>
-----------------------------------------	------------------------	-----------------------------	---------------------------------------

# RNAV (GPS) RWY 24

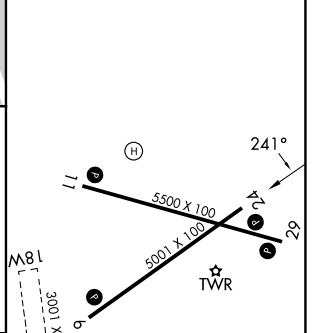
FLAGLER EXEC (FIN)

RNP APCH - GPS.		MISSED APPROACH: Climb to 2300 direct KABEC and hold.	
<p>▼ Rwy 24 helicopter visibility reduction below 1 SM NA. Circling NA to Rwy's 18W and 36W. Straight-in Rwy 24 NA at night, Circling Rwy 11, 24 NA at night.</p>			

ATIS <b>128.325</b>	DAYTONA APP CON <b>125.8 269.075</b>	FLAGLER TOWER ★ <b>118.95 (CTAF)</b>	GND CON <b>121.75</b>	UNICOM <b>123.0</b>
------------------------	-----------------------------------------	-----------------------------------------	--------------------------	------------------------



ELEV 33	TDZE 33
---------	---------



CATEGORY	A	B	C	D
LP MDA	380-1 347 (400-1)			
LNAV MDA	440-1 407 (500-1)	440-1 1/8 407 (500-1 1/8)		
CIRCLING	500-1 467 (500-1)	760-2 727 (800-2)	760-2 1/4 727 (800-2 1/4)	

REIL Rwy's 6, 11, 24, and 29  
MIRL Rwy's 6-24 and 11-29

SE-3, 16 APR 2026 to 14 MAY 2026

SE-3, 16 APR 2026 to 14 MAY 2026