

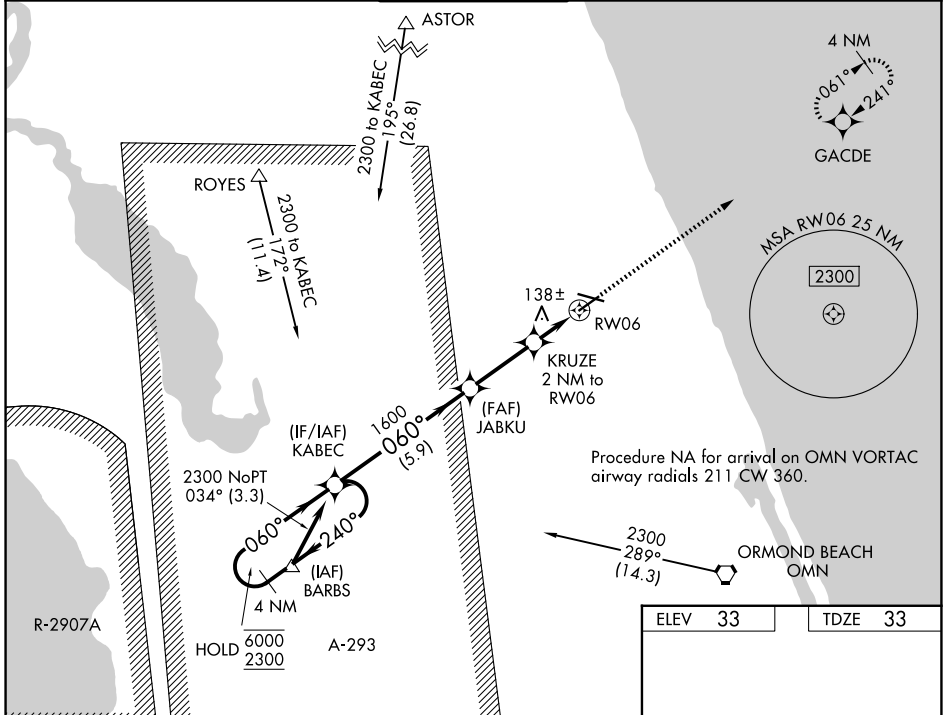
WAAS CH <b>49209</b> <b>W06A</b>	APP CRS <b>060°</b>	Rwy Ldg TDZE Apt Elev	<b>5001</b> <b>33</b> <b>33</b>
--	------------------------	-----------------------------	---------------------------------------

# RNAV (GPS) RWY 6

FLAGLER EXEC (FIN)

RNP APCH-GPS.		MISSED APPROACH: Climb to 2300 direct GACDE and hold.	
<b>⚠</b>	Circling NA to Rwy 18W and 36W. For uncompensated Baro-VNAV systems, LNAV/VNAV NA below -15°C or above 54°C. Rwy 6 helicopter visibility reduction below 3/4 SM NA. Circling Rwy 11, 24 NA at night.		

ATIS <b>128.325</b>	DAYTONA APP CON <b>125.8 269.075</b>	FLAGLER TOWER ★ <b>118.95 (CTAF) 0</b>	GND CON <b>121.75</b>	UNICOM <b>123.0</b>
------------------------	---	---	--------------------------	------------------------



SE-3, 16 APR 2026 to 14 MAY 2026

SE-3, 16 APR 2026 to 14 MAY 2026

4 NM Holding Pattern		KABEC		2300 GACDE	
6000 ← 240°		→ 060°		↑	
2300		1600		★	
GP 3.00°		1600		1600	
TCH 41		700		1600	
		5.9 NM		2.8 NM	
		1 NM		1 NM	
CATEGORY	A	B	C	D	
LPV DA		312-7/8	279 (300-7/8)		
LNAV/VNAV DA		292-7/8	259 (300-7/8)		
LNAV MDA		400-1	367 (400-1)		
CIRCLING	500-1	467 (500-1)	760-2	760-2 1/4	760-2 1/4
			727 (800-2)	727 (800-2 1/4)	727 (800-2 1/4)

REIL Rwy 6, 11, 24, and 29 **0**

MIRL Rwy 6-24 and 11-29 **0**