

WAAS CH <b>78238</b> <b>W17A</b>	APP CRS <b>174°</b>	Rwy Idg TDZE Apt Elev	<b>4149</b> <b>1232</b> <b>1232</b>
--	------------------------	-----------------------------	---

# RNAV (GPS) RWY 17

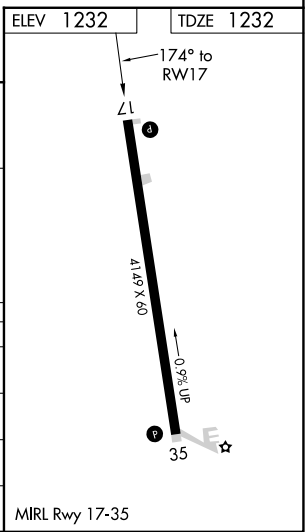
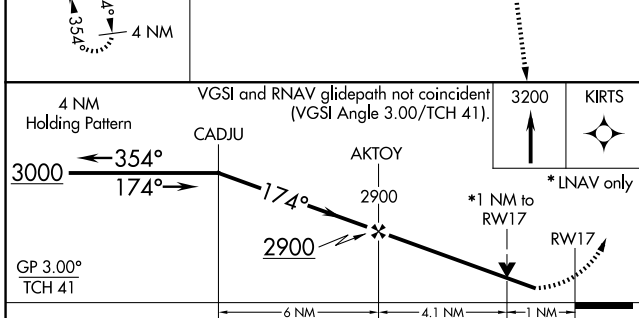
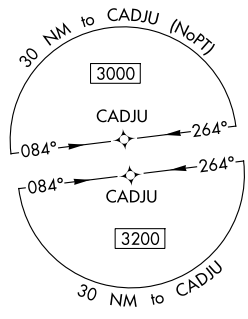
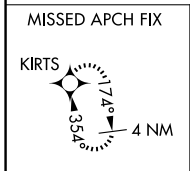
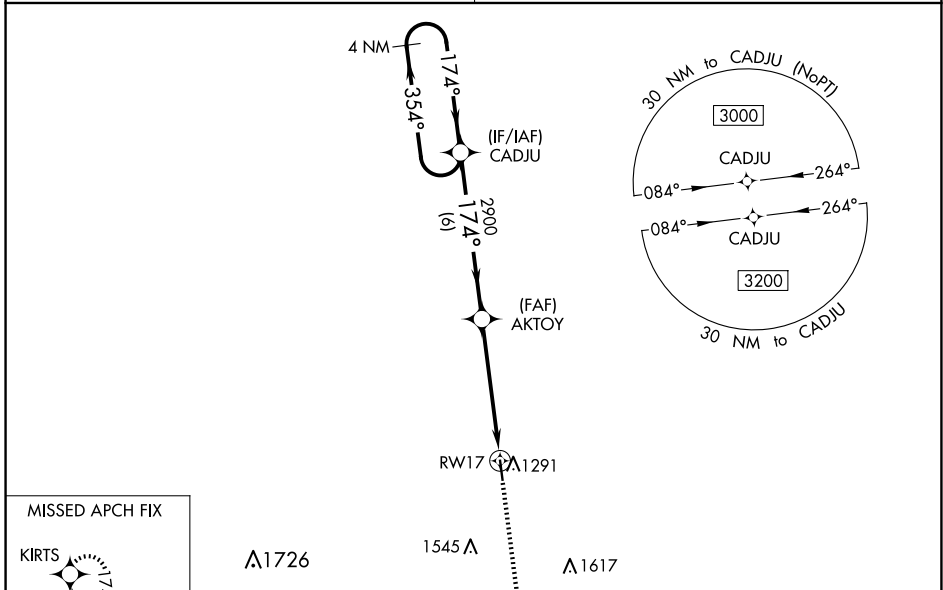
GEORGE L SCOTT MUNI (3Y2)

**RNP APCH.**

**NA** For uncompensated Baro-VNAV systems, LNAV/VNAV NA below -17°C (2°F) or above 54°C (130°F). Baro-VNAV and VDP NA when using DecoraH altimeter setting. Helicopter visibility reduction below 3/4 SM NA. Obtain local altimeter setting on CTAF; when not received, use DecoraH altimeter setting and increase LPV and LNAV/VNAV DA to 1533 all Cats, increase all MDA 60 feet, and LNAV Cat C visibility 1/8 mile.

**MISSED APPROACH:** Climb to 3200 direct KIRTS and hold.

MINNEAPOLIS CENTER <b>118.85</b>	UNICOM <b>122.8 (CTAF)</b>
-------------------------------------	-------------------------------



CATEGORY	A	B	C	D
LPV DA		1482-1 250 (300-1)		NA
LNAV/VNAV DA		1482-1 250 (300-1)		NA
LNAV MDA		1580-1 348 (400-1)		NA
<b>C</b> CIRCLING	1740-1 508 (600-1)		1860-1 3/4 628 (700-1 3/4)	NA

NC-3, 16 APR 2026 to 14 MAY 2026

NC-3, 16 APR 2026 to 14 MAY 2026