

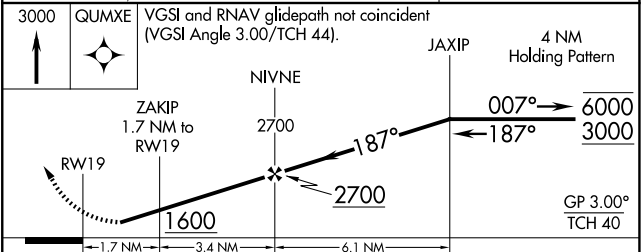
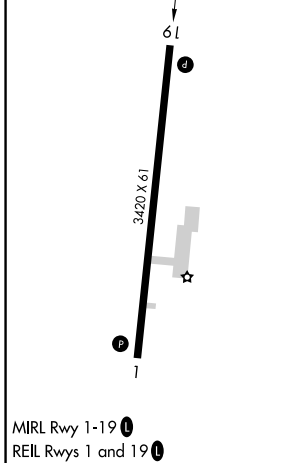
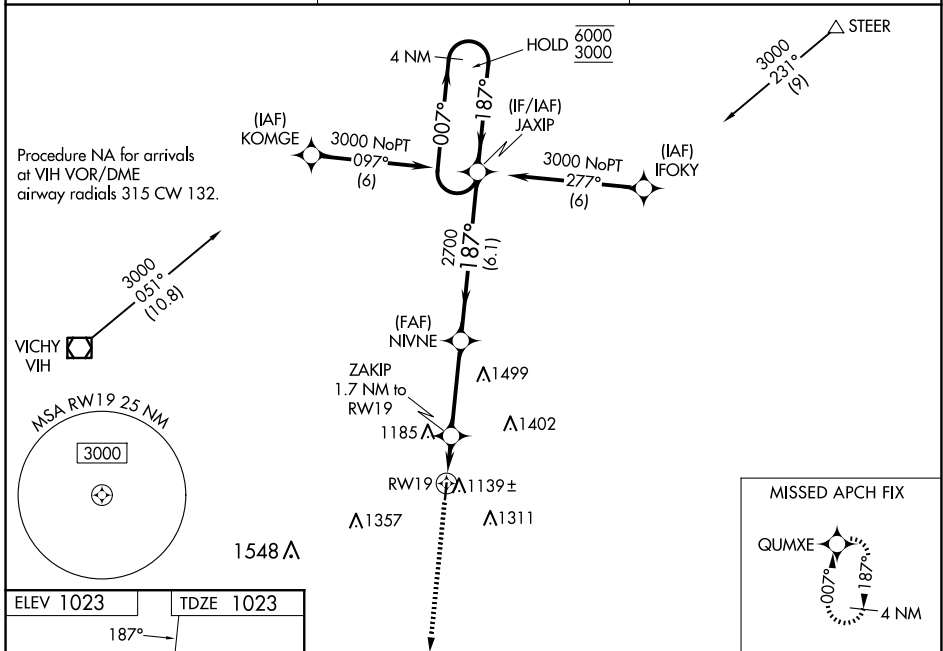
WAAS CH 40220 W19A	APP CRS 187°	Rwy Idg 3420 TDZE 1023 Apt Elev 1023
--	------------------------	--

RNAV (GPS) RWY 19

CUBA MUNI (UBX)

RNP APCH - GPS.	<p>NA Circling to Rwy 1 NA at night. Circling NA for Cat B east of Rwy 19-1. Rwy 19 helicopter visibility reduction below 3/4 SM NA. Baro-VNAV NA. Use Rolla/Vichy altimeter setting; when not received, use Fort Leonard Wood altimeter setting and increase all DA 54 feet and all MDA 60 feet; increase LPV Cat A/B and LNAV/VNAV Cat A/B visibilities 1/4 SM.</p>	<p>MISSED APPROACH: Climb to 3000 direct QUMXE and hold.</p>

VIH ASOS 119.025	KANSAS CITY CENTER 128.35 284.675	UNICOM 122.8 (CTAF)
----------------------------	---	-------------------------------



CATEGORY	A	B	C	D
LPV DA	1329-1	306 (400-1)		NA
LNAV/VNAV DA	1357-1 1/8	334 (400-1 1/8)		NA
LNAV MDA	1460-1	437 (500-1)		NA
C CIRCLING	1560-1	537 (600-1)		NA

NC-3, 16 APR 2026 to 14 MAY 2026

NC-3, 16 APR 2026 to 14 MAY 2026