

KUSSO TWO DEPARTURE (RNAV)
(KUSSO2.KUSSO) 22JAN26

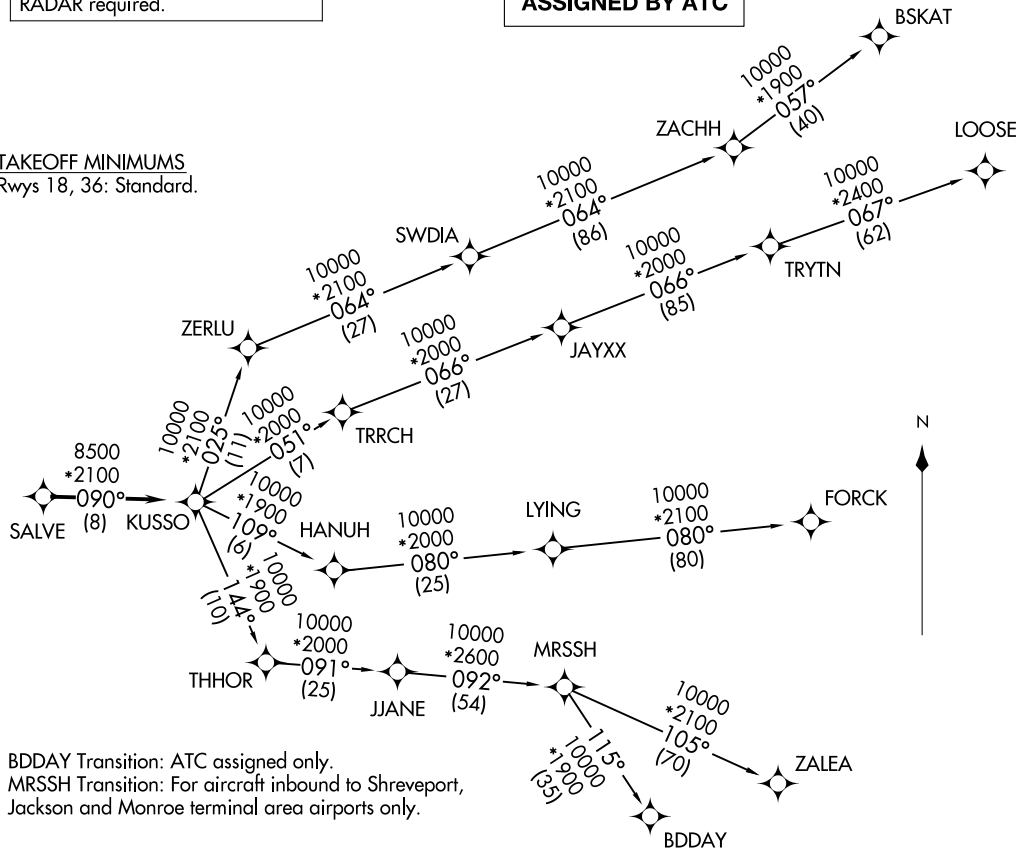
LONE STAR DEP CON
125.2 343.65
CTAF
120.3

RNAV 1 - DME/DME/IRU or GPS.

RADAR required.

**TOP ALTITUDE:
ASSIGNED BY ATC**

TAKEOFF MINIMUMS
Rwys 18, 36: Standard.



NOTE: BDDAY Transition: ATC assigned only.
NOTE: MRSSH Transition: For aircraft inbound to Shreveport, Jackson and Monroe terminal area airports only.

(CONTINUED ON FOLLOWING PAGE)

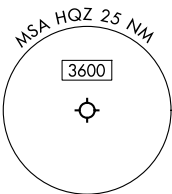
NOTE: Chart not to scale.

(KUSSO2.KUSSO) 26022
KUSSO TWO DEPARTURE (RNAV)

AL-6444 (FAA)

MESQUITE METRO (H0Z)
MESQUITE, TEXAS

MESQUITE, TEXAS
MESQUITE METRO (H0Z)



KUSSO TWO DEPARTURE (RNAV)



DEPARTURE ROUTE DESCRIPTION

When entering controlled airspace, fly heading assigned by ATC, expect vector to SALVE, then on track 090° to KUSSO, then on assigned transition. Maintain ATC assigned altitude, expect filed altitude 10 minutes after departure.

- BDDAY TRANSITION (KUSSO2.BDDAY)
- BSKAT TRANSITION (KUSSO2.BSKAT)
- FORCK TRANSITION (KUSSO2.FORCK)
- LOOSE TRANSITION (KUSSO2.LOOSE)
- MRSSH TRANSITION (KUSSO2.MRSSH)
- ZALEA TRANSITION (KUSSO2.ZALEA)

SC-2, 16 APR 2026 to 14 MAY 2026

SC-2, 16 APR 2026 to 14 MAY 2026