

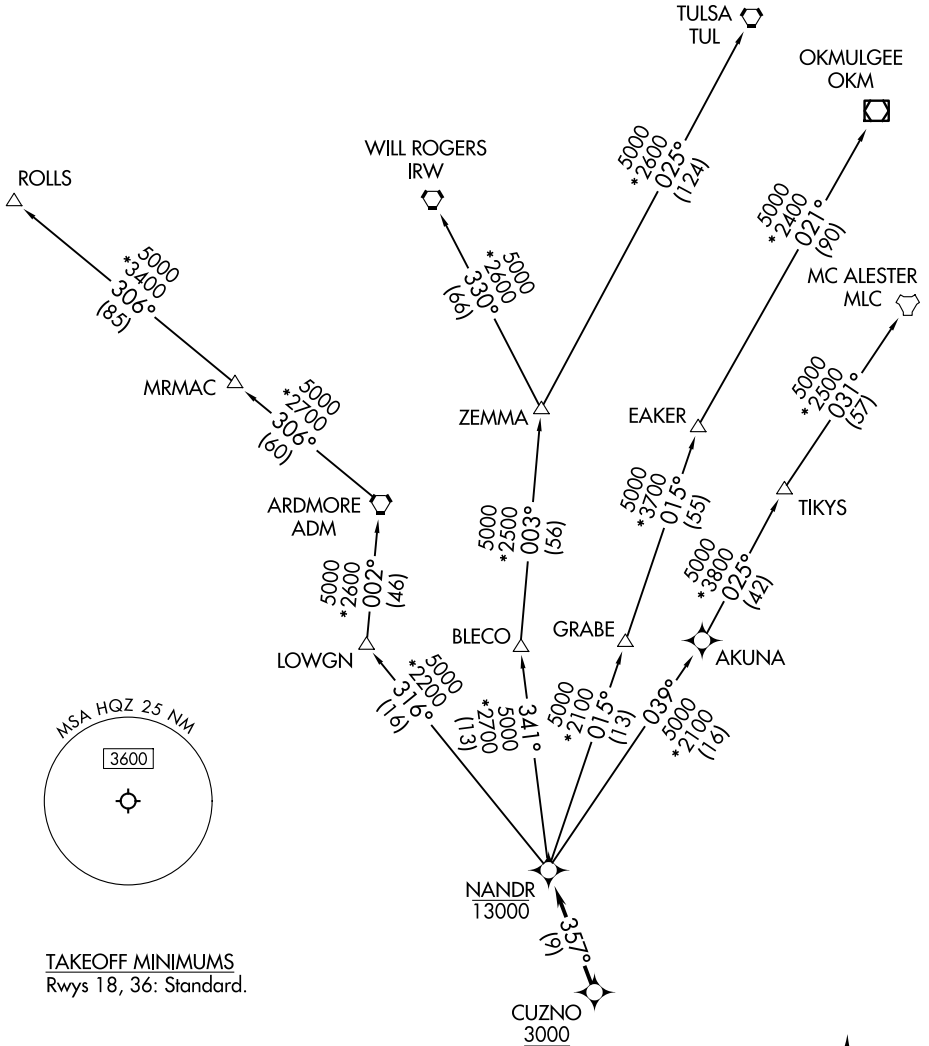
# NANDR THREE DEPARTURE (RNAV)

LONE STAR DEP CON  
125.2 343.65 (Rwy 18)  
124.3 282.275 (Rwy 36)

RNAV 1 - DME/DME/IRU or GPS.

RADAR required.

**TOP ALTITUDE:  
ASSIGNED BY ATC**



SC-2, 16 APR 2026 to 14 MAY 2026

SC-2, 16 APR 2026 to 14 MAY 2026

NOTE: Chart not to scale.

(CONTINUED ON FOLLOWING PAGE)

# NANDR THREE DEPARTURE (RNAV)

(NANDR3.NANDR) 17APR25

# NANDR THREE DEPARTURE (RNAV)



## DEPARTURE ROUTE DESCRIPTION

TAKEOFF RUNWAY 18: Climb on heading 178° or as assigned by ATC, thence. . .

TAKEOFF RUNWAY 36: Climb on heading 358° or as assigned by ATC, thence. . .

. . . expect RADAR vectors to cross CUZNO at or above 3000, then on track 357° to cross NANDR at or below 13000, then on assigned transition.

EAKER TRANSITION (NANDR3.EAKER)

MC ALESTER TRANSITION (NANDR3.MLC)

OKMULGEE TRANSITION (NANDR3.OKM)

ROLLS TRANSITION (NANDR3.ROLLS)

TULSA TRANSITION (NANDR3.TUL)

WILL ROGERS TRANSITION (NANDR3.IRW)

ZEMMA TRANSITION (NANDR3.ZEMMA)

SC-2, 16 APR 2026 to 14 MAY 2026

SC-2, 16 APR 2026 to 14 MAY 2026