

WAAS CH 61216 W20A	APP CRS 200°	Rwy Idg 6100 TDZE 3786 Apt Elev 3788
--	------------------------	---

RNAV (GPS) RWY 20

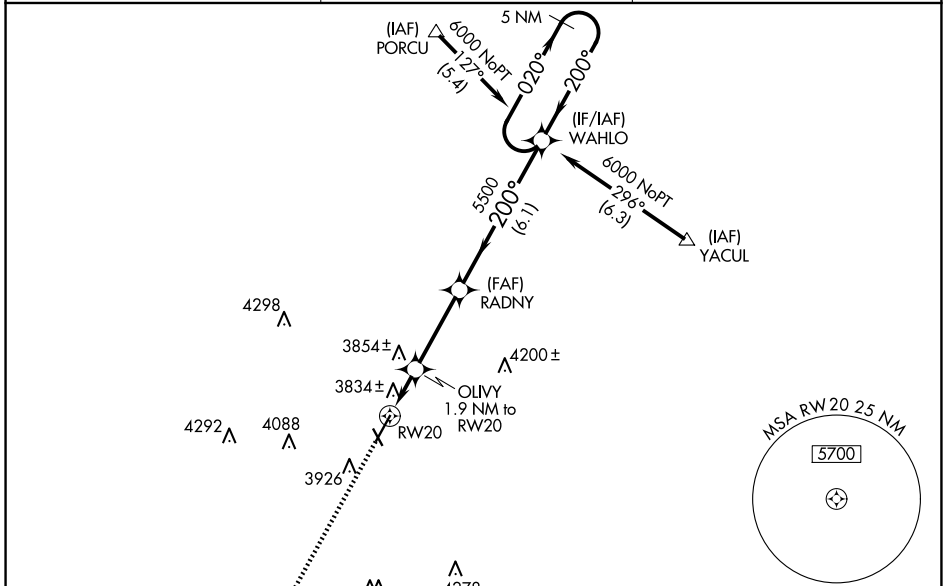
HEREFORD MUNI (HR.X)

RNP APCH - GPS.

⚠ For uncompensated Baro-VNAV systems, LNAV/VNAV NA below -22°C or above 41°C. When local altimeter setting not received, use AMA altimeter setting: increase LPV DA to 4098 feet and all visibilities ¼ SM; increase LNAV/VNAV DA to 4232 feet and all visibilities ¼ SM; increase all MDAs 120 feet and LNAV visibility Cats C and D ½ SM, increase Circling visibility Cat C ½ SM and Cat D ¼ SM. Circling NA to Rwy's 14 and 32. Baro-VNAV and VDP NA when using AMA altimeter setting.

MISSED APPROACH:
Climb to 6000 direct
LEMG and hold.

AWOS-3 118.05	AMARILLO APP CON ★ 119.5 307.0	UNICOM 122.8 (CTAF) ①
-------------------------	--	---------------------------------



ELEV 3788 | TDZE 3786

LEMG

6000 | LEMG

5 NM Holding Pattern

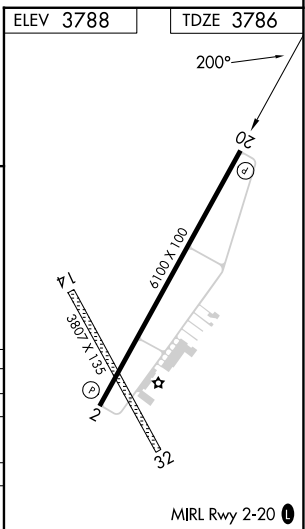
1.2 NM to RW20

1.9 NM to RW20

3.3 NM

6.1 NM

CATEGORY	A	B	C	D
LPV DA	3986-¾ 200 (200-¾)			
LNAV/VNAV DA	4120-1¼ 334 (400-1¼)			
LNAV MDA	4220-1	434 (500-1)	4220-1¼	434 (500-1¼)
CIRCLING	4280-1	492 (500-1)	4440-1¾	4620-2¾
			652 (700-1¾)	832 (900-2¾)



SC-2, 16 APR 2026 to 14 MAY 2026

SC-2, 16 APR 2026 to 14 MAY 2026