


WAAS CH 56310 W25A	APP CRS 252°	Rwy Ldg 6005 TDZE 860 Apt Elev 862
--	------------------------	---

RNAV (GPS) RWY 25

INDIANAPOLIS RGNL (MQJ)

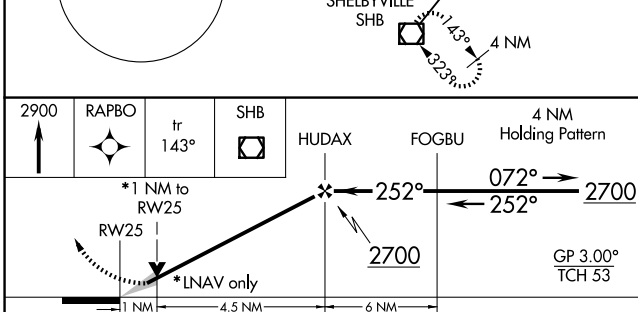
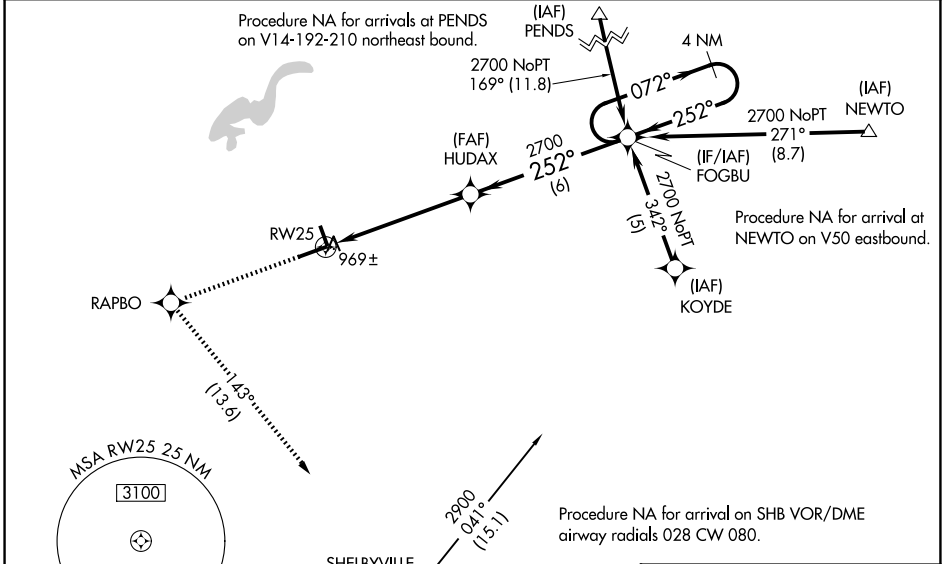
⚠ For uncompensated Baro-VNAV systems, LNAV/VNAV NA below -16°C (4°F) or above 54°C (130°F). Baro-VNAV and VDP NA when using Indianapolis Intl altimeter setting. DME/DME RNP-0.3 NA. When local altimeter setting not received, use Indianapolis Intl altimeter setting and increase all DA 55 feet and all MDA 60 feet, and increase all visibilities ½ SM. When using Indianapolis altimeter setting inoperative table does not apply. For inoperative ALS, increase LPV all Cats visibility to 1 SM.

MALSR

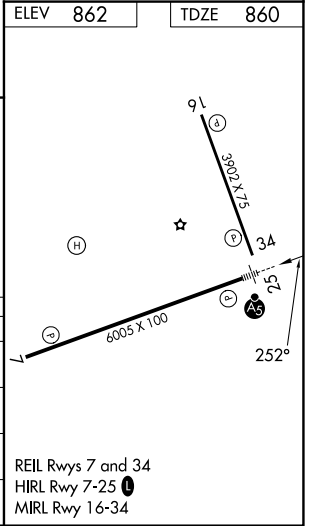


MISSED APPROACH:
Climb to 2900 direct RAPBO and on track 143° to SHB VOR/DME and hold.

AWOS-3PT 124.175	INDIANAPOLIS APP CON 127.15 317.8	UNICOM 122.975 (CTAF) ①
-----------------------------------	--	--



CATEGORY	A	B	C	D
LPV DA	1160-½		300 (300-½)	
LNAV/VNAV DA	1259-⅞		399 (400-⅞)	
LNAV MDA	1220-½ 360 (400-½)		1220-⅝ 360 (400-⅝)	
CIRCLING	1340-1 478 (500-1)		1360-1½ 498 (500-1½) 1660-2½ 798 (800-2½)	



EC-2, 16 APR 2026 to 14 MAY 2026

EC-2, 16 APR 2026 to 14 MAY 2026