

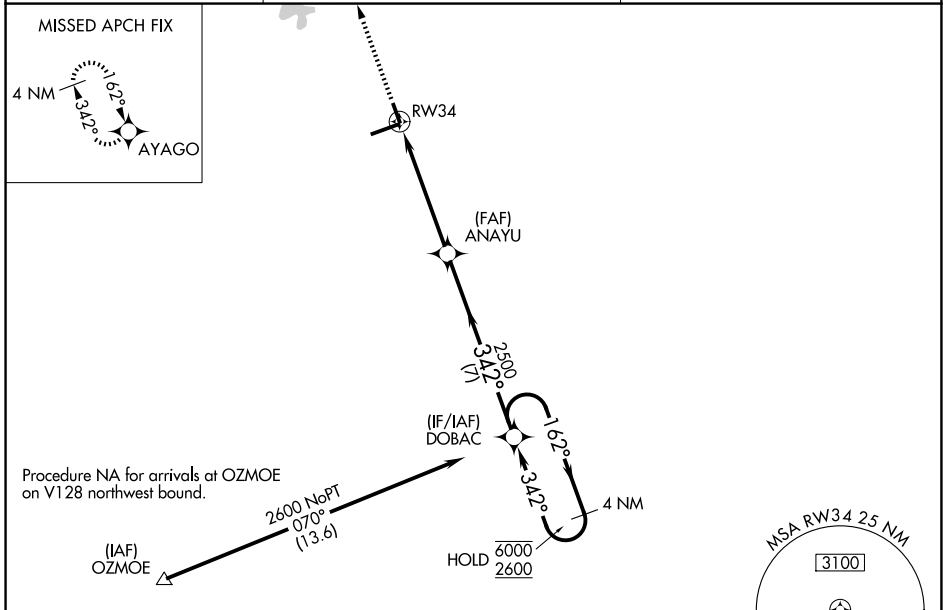
WAAS CH 45634 W34A	APP CRS 342°	Rwy Ldg TDZE Apt Elev	3902 858 862
--	------------------------	-----------------------------	---

RNAV (GPS) RWY 34

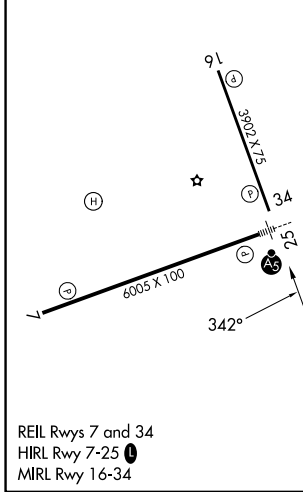
INDIANAPOLIS RGNL (MQJ)

RNP APCH.	MISSED APPROACH: Climb to 2500 direct AYAGO and hold.
NA	For uncompensated Baro-VNAV systems, LNAV/VNAV NA below -16°C (4°F) or above 54°C (130°F).

AWOS-3PT 124.175	INDIANAPOLIS APP CON 127.15 317.8	UNICOM 122.975 (CTAF) 0
----------------------------	---	--



ELEV 862	TDZE 858
----------	----------



2500	AYAGO	VGSi and RNAV glidepath not coincident (VGSi Angle 3.00/TCH 49).		4 NM Holding Pattern
		ANAYU	2500	DOBAC
* LNAV only.	* 1.3 NM to RWY 34	342°	162°	6000/2600
		342°	342°	GP 3.00° TCH 33
		1.3 NM	3.8 NM	7 NM
CATEGORY	A	B	C	D
LPV DA	1058- ³ / ₈		200 (200- ³ / ₈)	
LNAV/VNAV DA	1119- ⁷ / ₈		261 (300- ⁷ / ₈)	
LNAV MDA	1320-1	462 (500-1)	1320-1 ³ / ₈	462 (500-1 ³ / ₈)
CIRCLING	1340-1	478 (500-1)	1360-1 ¹ / ₂ 498 (500-1 ¹ / ₂)	1660-2 ¹ / ₂ 798 (800-2 ¹ / ₂)