

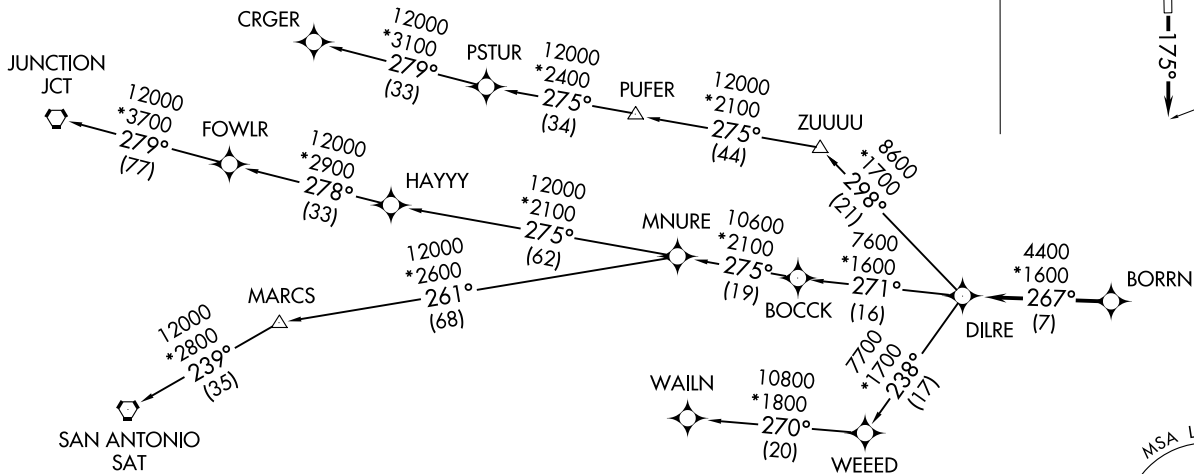
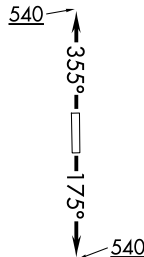
RNAV 1 - DME/DME/IRU or GPS.

RADAR required.

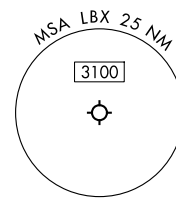
**TOP ALTITUDE:
ASSIGNED BY ATC**

ASOS
119.925
CTAF
123.0
CLNC DEL
125.2
HOUSTON DEP CON
134.45 284.0

TAKEOFF MINIMUMS
Rwys 17, 35: Standard with minimum
climb of 500'/NM to 540.



NOTE: CRGER-TRANSITION ATC assigned only
for aircraft departing 54T, AXH, EFD, GLS,
HPY, IWS, LBX, LVJ, SGR, TME, T00, T41.



NOTE: Chart not to scale.

(CONTINUED ON FOLLOWING PAGE)

BORRN SIX DEPARTURE (RNAV)
(BORRN6.BORRN) 30NOV23

ANGELTON/LAKE JACKSON, TEXAS
TEXAS GULF COAST RGNL (LBX)

(BORRN6.BORRN) 29051
BORRN SIX DEPARTURE (RNAV)

AL6453 (FAA)
TEXAS GULF COAST RGNL (LBX)
ANGELTON/LAKE JACKSON, TEXAS

BORRN SIX DEPARTURE (RNAV)



DEPARTURE ROUTE DESCRIPTION

TAKEOFF RUNWAY 17: Climb on heading 175° to 540, for RADAR vectors to BORRN, thence. . . .

TAKEOFF RUNWAY 35: Climb on heading 355° to 540, for RADAR vectors to BORRN, thence. . . .

. . . .on track 267° to DILRE, then on (transition). Maintain ATC assigned altitude. Expect filed altitude 10 minutes after departure.

CRGER TRANSITION (BORRN6.CRGER)

JUNCTION TRANSITION (BORRN6.JCT)

MNURE TRANSITION (BORRN6.MNURE)

SAN ANTONIO TRANSITION (BORRN6.SAT)

WAILN TRANSITION (BORRN6.WAILN)

SC-5, 16 APR 2026 to 14 MAY 2026

SC-5, 16 APR 2026 to 14 MAY 2026