

# GIFFA ONE DEPARTURE

AL-6453 (FAA)

TEXAS GULF COAST RGNL (LBX)  
ANGLETON/LAKE JACKSON, TEXAS

ASOS  
119.925  
CLNC DEL  
125.2  
CTAF  
123.0  
HOUSTON DEP CON  
134.45 284.0

**TOP ALTITUDE:  
ASSIGNED BY ATC**

NOTE: RADAR required.  
NOTE: For aircraft destined for the DFW  
terminal area only.

LEONA  
110.8 LOA  
Chan 45

CEDAR CREEK  
114.8 CQY  
Chan 95

DAISETTA  
116.9 DAS  
Chan 116

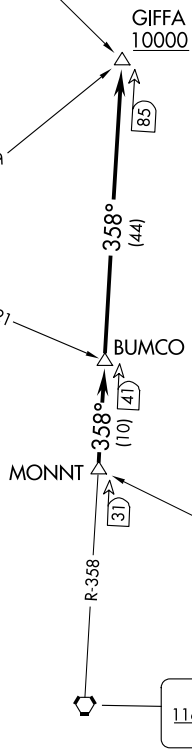
HUMBLE  
116.6 IAH  
Chan 113

TAKEOFF MINIMUMS  
Rwys 17, 35: Standard.

**DEPARTURE ROUTE DESCRIPTION**

TAKEOFF ALL RUNWAYS: When entering controlled airspace, climb on assigned heading for RADAR vectors to MONNT INT. Maintain ATC assigned altitude. Expect filed altitude 10 minutes after departure, thence. . . .

. . . . on IAH R-358 to cross GIFFA INT at or above 10000.



SC-5, 16 APR 2026 to 14 MAY 2026

SC-5, 16 APR 2026 to 14 MAY 2026

NOTE: Chart not to scale.