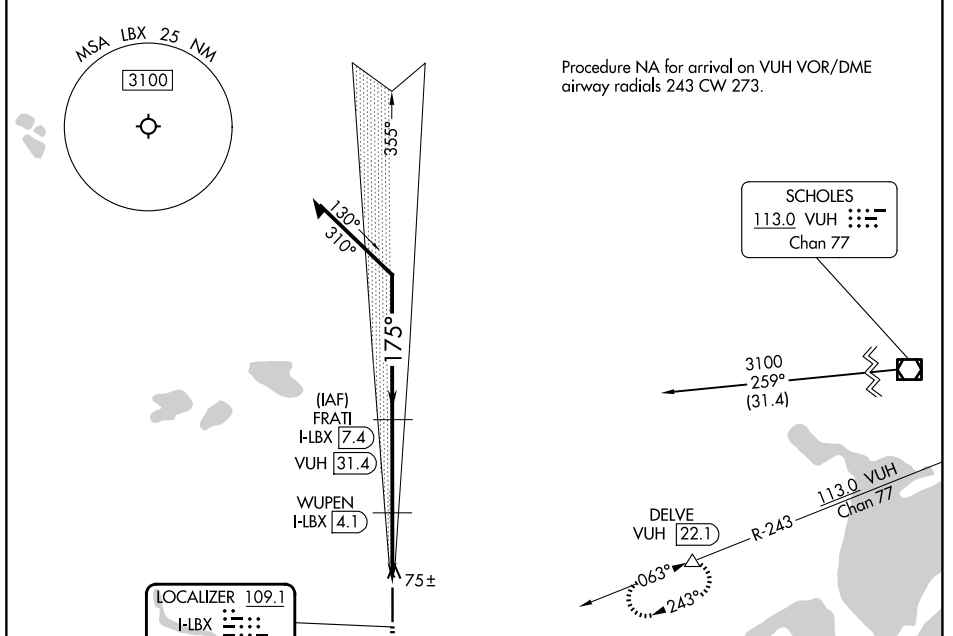


LOC/DME I-LBX 109.1 Chan 28	APP CRS 175°	Rwy Ldg 7000 TDZE 25 Apt Elev 25
---	------------------------	---

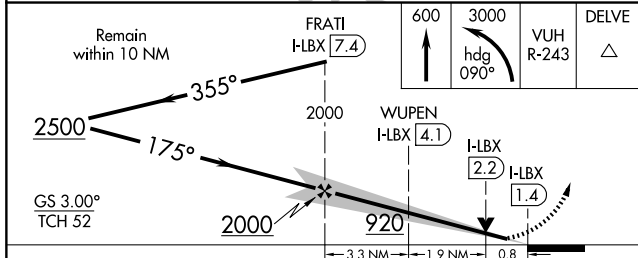
ILS or LOC RWY 17

TEXAS GULF COAST RGNL (L.BX)

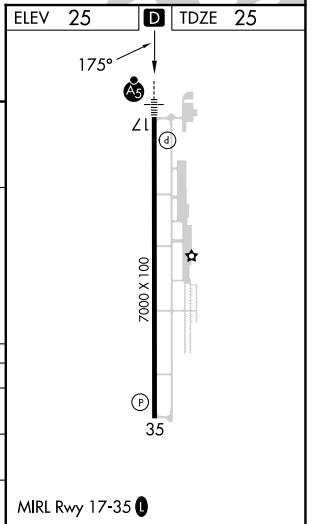
DME required.		MALSR	MISSED APPROACH: Climb to 600 then climbing left turn to 3000 on heading 090° and VUH VOR/DME R-243 to DELVE/VUH 22.1 DME and hold, continue climb-in-hold to 3000.
ASOS 119.925	HOUSTON APP CON 134.45 284.0	CLNC DEL 125.2	UNICOM 123.0 (CTAF) 0



ELEV 25	D	TDZE 25
---------	---	---------



CATEGORY	A	B	C	D
S-ILS 17		225-½	200 (200-½)	
S-LOC 17		340-½	315 (400-½)	
CIRCLING	500-1	475 (500-1)	500-1½ 475 (500-1½)	620-2 595 (600-2)



SC-5, 16 APR 2026 to 14 MAY 2026

SC-5, 16 APR 2026 to 14 MAY 2026