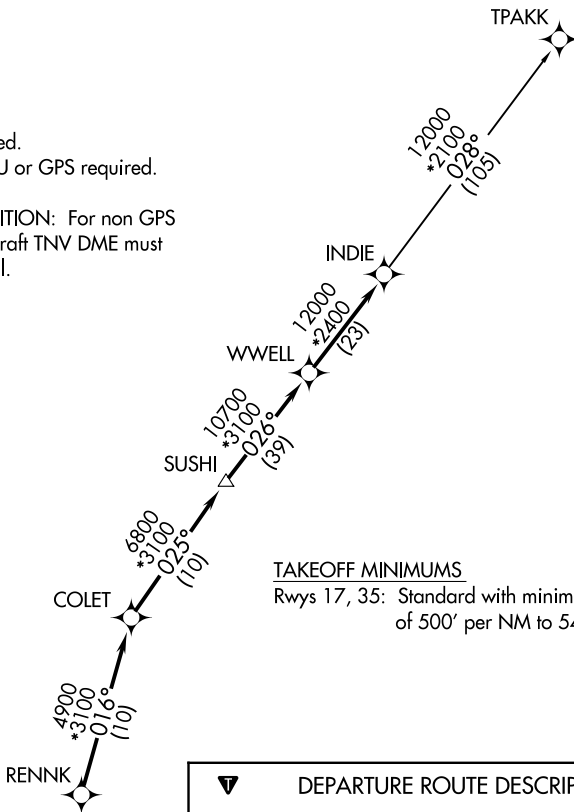


INDIE EIGHT DEPARTURE (RNAV)

**TOP ALTITUDE:
ASSIGNED BY ATC**

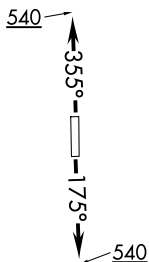
ASOS
119.925
CLNC DEL
125.2
CTAF
123.0
HOUSTON DEP CON
134.45 284.0

NOTE: RADAR required.
NOTE: DME/DME/IRU or GPS required.
NOTE: RNAV 1.
NOTE: TPAKK TRANSITION: For non GPS equipped aircraft TNV DME must be operational.



TAKEOFF MINIMUMS

Rwys 17, 35: Standard with minimum climb of 500' per NM to 540.



DEPARTURE ROUTE DESCRIPTION

TAKEOFF RUNWAY 17: Climb on heading 175° to 540 for RADAR vectors to RENNK, thence . . .

TAKEOFF RUNWAY 35: Climb on heading 355° to 540 for RADAR vectors to RENNK, thence . . .

. . . on track 016° to COLET, then on track 025° to SUSHI, then on track 026° to WWELL, then on track 026° to INDIE, then on (transition).

Maintain ATC assigned altitude. Expect filed altitude 10 minutes after departure.

TPAKK TRANSITION (INDIE8.TPAKK)

NOTE: Chart not to scale.

INDIE EIGHT DEPARTURE (RNAV)

(INDIE8.INDIE) 07OCT21