

RNAV-1 DME/DME/IRU or GPS.

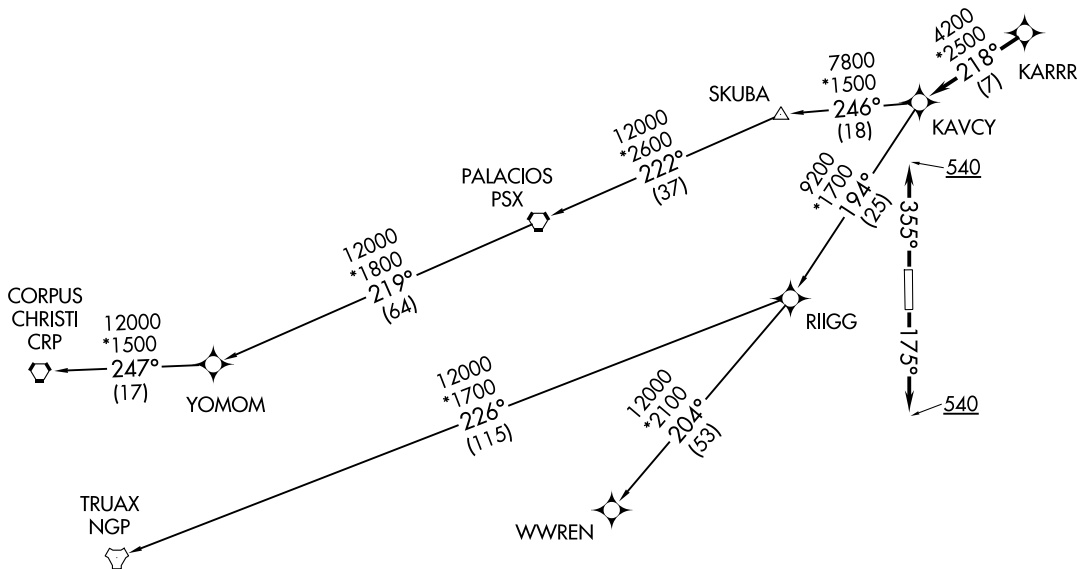
RADAR required.

TOP ALTITUDE:
ASSIGNED BY ATC

ASOS
119.925
CTAF
123.0
CLNC DEL
125.2
HOUSTON DEP CON
134.45 284.0

TAKEOFF MINIMUMS

Rwys 17, 35: Standard with minimum climb of 500' per NM to 540.



(NARRATIVE ON FOLLOWING PAGE)

NOTE: Chart not to scale.

KARRR SEVEN DEPARTURE (RNAV)
(KARRR7 .KARRR) 29DEC22

ANGLETON/LAKE JACKSON, TEXAS
TEXAS GULF COAST RGNL (L.BX)

(KARRR7 .KARRR) 22363
KARRR SEVEN DEPARTURE (RNAV)

AL-6453 (FAA)

TEXAS GULF COAST RGNL (L.BX)
ANGLETON/LAKE JACKSON, TEXAS

KARRR SEVEN DEPARTURE (RNAV)



DEPARTURE ROUTE DESCRIPTION

TAKEOFF RUNWAY 17: Climb on heading 175° to 540, for RADAR vectors to KARRR, thence. . . .

TAKEOFF RUNWAY 35: Climb on heading 355° to 540, for RADAR vectors to KARRR, thence. . . .

. . . .on track 218° to KAVCY, then on (transition). Maintain ATC assigned altitude. Expect filed altitude 10 minutes after departure.

CORPUS CHRISTI TRANSITION (KARRR7.CRP)

PALACIOS TRANSITION (KARRR7.PSX)

TRUAX TRANSITION (KARRR7.NGP)

WWREN TRANSITION (KARRR7.WWREN)

YOMOM TRANSITION (KARRR7.YOMOM)

SC-5, 16 APR 2026 to 14 MAY 2026

SC-5, 16 APR 2026 to 14 MAY 2026