


| | | |
|--|------------------------|---|
| WAAS CH 70316 W17A | APP CRS 175° | Rwy Ldg 7000 TDZE 25 Apt Elev 25 |
|--|------------------------|---|

RNAV (GPS) RWY 17

TEXAS GULF COAST RGNL (L.B.X)

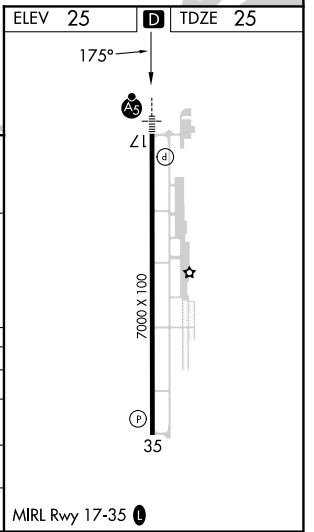
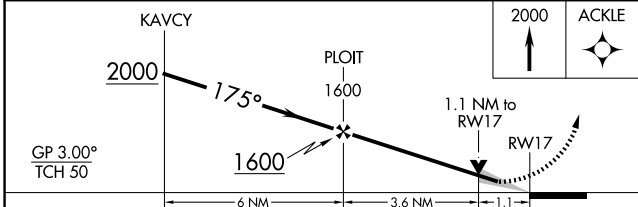
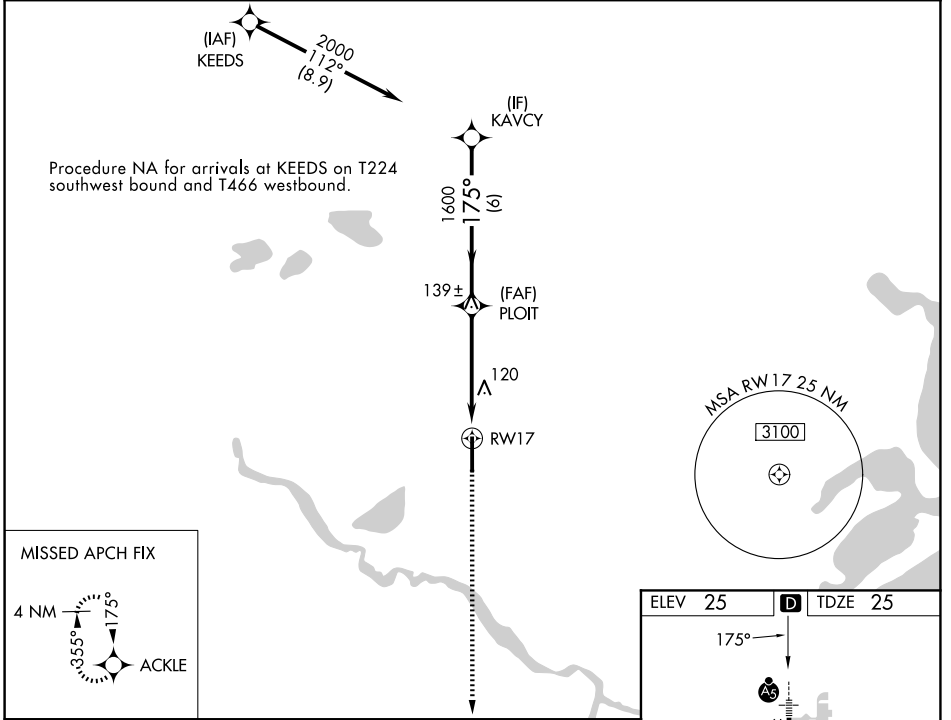
RNP APCH - GPS.

⚠ Circling NA east of Rwy 17-35. Baro-VNAV and VDP NA when using HOU altimeter setting. For uncompensated Baro-VNAV systems, LNAV/VNAV NA below -16°C or above 54°C. When local altimeter setting not received, use HOU altimeter setting and increase LPV DA to 363 feet; increase LNAV/VNAV DA to 441 feet and all visibilities ¼ SM; increase all MDAs 100 feet and LNAV visibility Cat C/D ⅔ SM, and Circling visibility Cat D ¼ SM.

MALSR 

MISSED APPROACH: Climb to 2000 direct ACKLE and hold.

| | | | |
|------------------------|--|--------------------------|---------------------------------|
| ASOS 119,925 | HOUSTON APP CON 134.45 284.0 | CLNC DEL 125.2 | UNICOM 123.0 (CTAF) 0 |
|------------------------|--|--------------------------|---------------------------------|



| CATEGORY | A | B | C | D |
|--------------|----------------------|----------------------|------------------------|----------------------|
| LPV DA | | 282-½ | 257 (300-½) | |
| LNAV/VNAV DA | | 360-½ | 335 (400-½) | |
| LNAV MDA | 420-½ | 395 (400-½) | 420-⅝ | 395 (400-⅝) |
| CIRCLING | 480-1 455 (500-1) | 500-1 475 (500-1) | 500-1½ 475 (500-1½) | 620-2 595 (600-2) |

MIRL Rwy 17-35 0

SC-5, 16 APR 2026 to 14 MAY 2026

SC-5, 16 APR 2026 to 14 MAY 2026