

APP CRS 059°	Rwy Idg 3300
	TDZE 688
	Apt Elev 688

RNAV (GPS) RWY 6

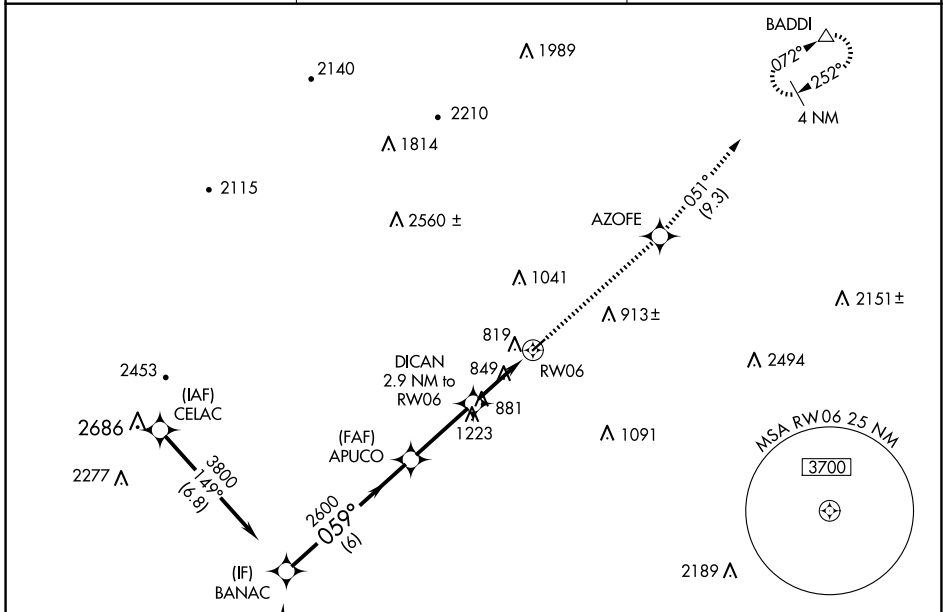
FRANKLIN COUNTY RGNL (N68)

RNP APCH - GPS.

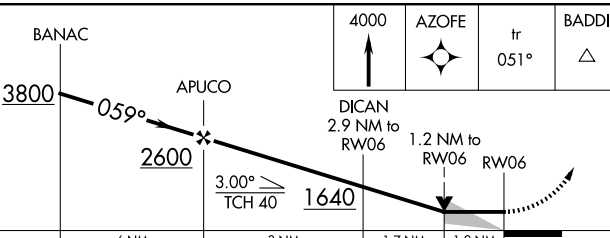
▼ Circling to Rwy 24 NA at night. VDP NA when using Hagerstown, MD altimeter setting.
▲ NA When local altimeter setting not received, use Hagerstown, MD altimeter setting and increase all MDAs 40 feet, increase LNAV Cat C visibility ¼ SM.

MISSED APPROACH: Climb to 4000 direct AZOFE and on track 051° to BADDI and hold, continue climb-in-hold to 4000.

AWOS-3 120.725	HARRISBURG APP CON 124.1 273.525	CTAF 122.9
--------------------------	--------------------------------------------	----------------------



Procedure NA for arrival on HGR VOR airway radials 291 CW 052.



ELEV 688	TDZE 688
----------	----------

MIRL Rwy 6-24

CATEGORY	A	B	C	D
LNAV MDA	1100-1	412 (500-1)	1100-1½ 412 (500-1½)	NA
CIRCLING	1220-1	532 (600-1)	1360-2 672 (700-2)	NA

NE-4, 16 APR 2026 to 14 MAY 2026

NE-4, 16 APR 2026 to 14 MAY 2026