

(LURIC8.LURIC) 21280

AL-6460 (FAA)

PEARLAND RGNL (L.V.J)

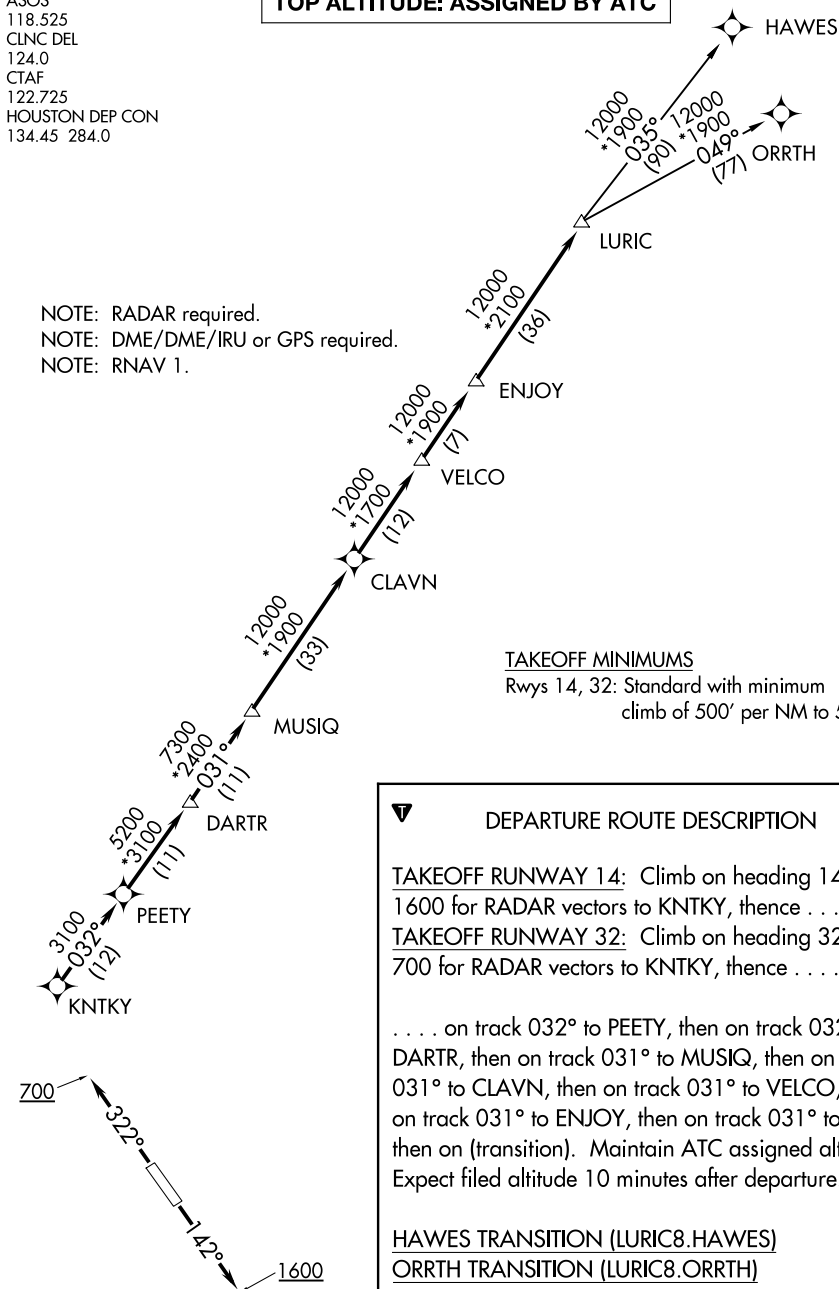
LURIC EIGHT DEPARTURE (RNAV)

HOUSTON, TEXAS

ASOS
118.525
CLNC DEL
124.0
CTAF
122.725
HOUSTON DEP CON
134.45 284.0

TOP ALTITUDE: ASSIGNED BY ATC

NOTE: RADAR required.
NOTE: DME/DME/IRU or GPS required.
NOTE: RNAV 1.



TAKEOFF MINIMUMS

Rwys 14, 32: Standard with minimum climb of 500' per NM to 560.



DEPARTURE ROUTE DESCRIPTION

TAKEOFF RUNWAY 14: Climb on heading 142° to 1600 for RADAR vectors to KNTKY, thence

TAKEOFF RUNWAY 32: Climb on heading 322° to 700 for RADAR vectors to KNTKY, thence

. . . . on track 032° to PEETY, then on track 032° to DARTR, then on track 031° to MUSIQ, then on track 031° to CLAVN, then on track 031° to VELCO, then on track 031° to ENJOY, then on track 031° to LURIC, then on (transition). Maintain ATC assigned altitude. Expect filed altitude 10 minutes after departure.

HAWES TRANSITION (LURIC8.HAWES)

ORRTH TRANSITION (LURIC8.ORRTH)

NOTE: Chart not to scale.

LURIC EIGHT DEPARTURE (RNAV)

(LURIC8.LURIC) 07OCT21

HOUSTON, TEXAS

PEARLAND RGNL (L.V.J)

SC-5, 16 APR 2026 to 14 MAY 2026

SC-5, 16 APR 2026 to 14 MAY 2026