

WAAS CH 93621 W32A	APP CRS 322°	Rwy Ldg 4313 TDZE 43 Apt Elev 44
--	------------------------	---

RNAV (GPS) RWY 32

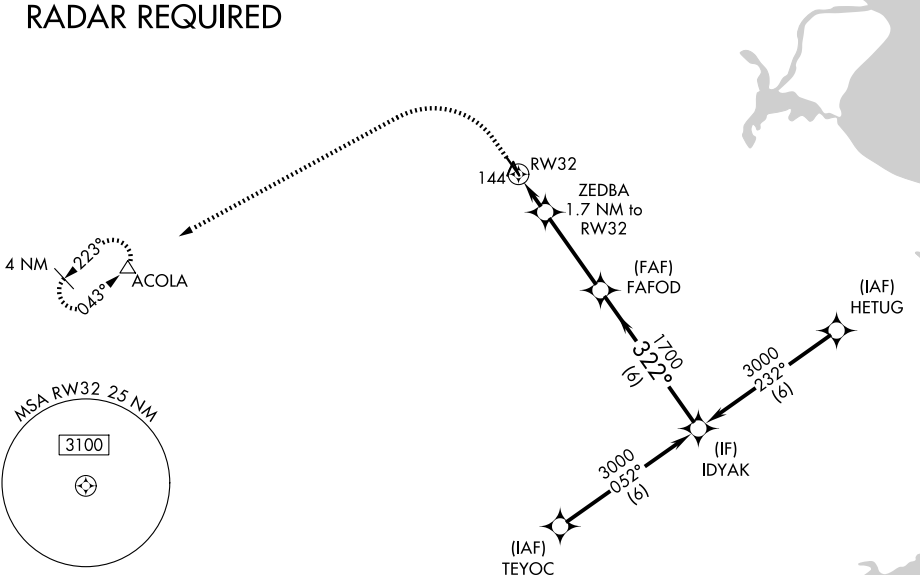
PEARLAND RGNL (L V J)

⚠ Circling to Rwy 14 NA at night. For uncompensated Baro-VNAV systems, LNAV/VNAV NA below -1°C (31°F) or above 54°C (130°F). When local altimeter setting not received, use William P Hobby altimeter setting and increase all DA 18 feet and all MDA 20 feet, increase LNAV/VNAV visibilities all Cats 1/8 mile. VDP and Baro-VNAV NA when using William P Hobby altimeter setting. DME/DME RNP-0.3 NA. Helicopter visibility reduction below 3/4 SM NA.

MISSED APPROACH: Climb to 500 then climbing left turn to 3000 direct ACOLA and hold.

ASOS 118.525	HOUSTON APP CON 134.45 284.0	UNICOM 122.725(CTAF) 0
------------------------	--	----------------------------------

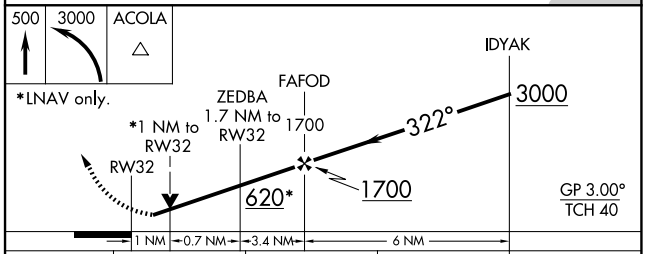
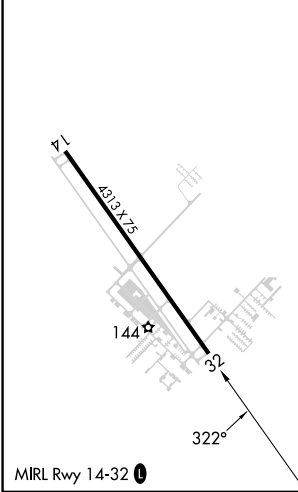
RADAR REQUIRED



SC-5, 16 APR 2026 to 14 MAY 2026

SC-5, 16 APR 2026 to 14 MAY 2026

ELEV 44	TDZE 43
----------------	----------------



CATEGORY	A	B	C	D
LPV DA	293-7/8	250 (300-7/8)		NA
LNAV/VNAV DA	310-7/8	267 (300-7/8)		NA
LNAV MDA	400-1	357 (400-1)		NA
CIRCLING	500-1	660-1		NA
	456 (500-1)	616 (700-1)		