

# STRYA EIGHT DEPARTURE (RNAV)

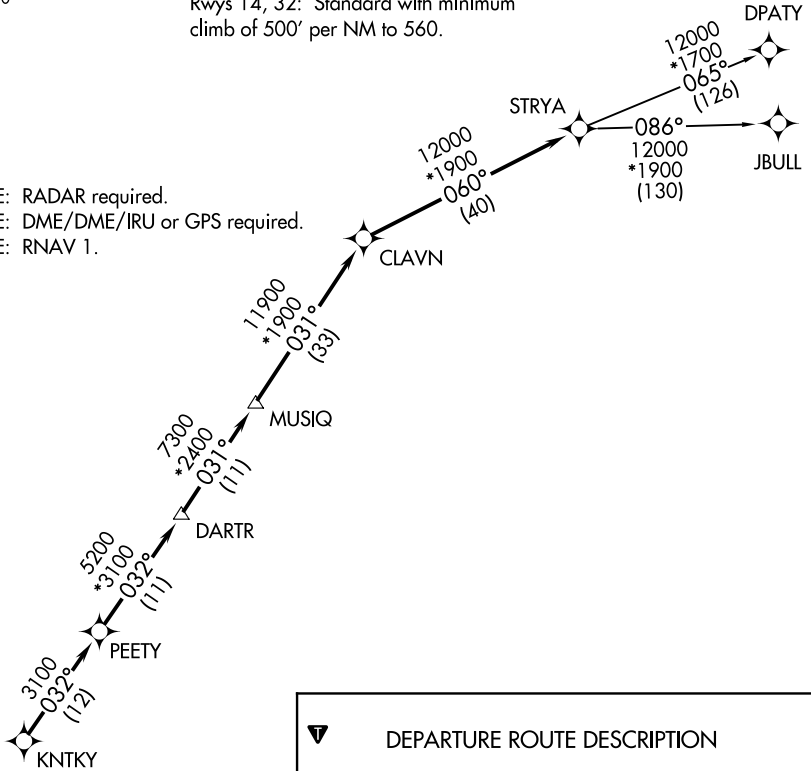
ASOS  
118.525  
CTAF  
122.725  
CLNC DEL  
124.0  
HOUSTON DEP CON  
134.45 284.0

**TOP ALTITUDE: ASSIGNED BY ATC**

### TAKEOFF MINIMUMS

Rwys 14, 32: Standard with minimum climb of 500' per NM to 560.

- NOTE: RADAR required.
- NOTE: DME/DME/IRU or GPS required.
- NOTE: RNAV 1.



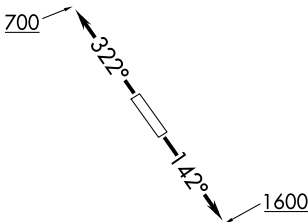
**DEPARTURE ROUTE DESCRIPTION**

TAKEOFF RUNWAY 14: Climb on heading 142° to 1600 for RADAR vectors to KNTKY, thence. . . .

TAKEOFF RUNWAY 32: Climb on heading 322° to 700 for RADAR vectors to KNTKY, thence. . . .

. . . .on track 032° to PEETY, then on track 032° to DARTR, then on track 031° to MUSIQ, then on track 031° to CLAVN, then on track 060° to STRYA, then on (transition). Maintain ATC assigned altitude. Expect filed altitude 10 minutes after departure.

DPATY TRANSITION (STRYA8.DPATY)  
JBULL TRANSITION (STRYA8.JBULL)



NOTE: Chart not to scale.

SC-5, 16 APR 2026 to 14 MAY 2026

SC-5, 16 APR 2026 to 14 MAY 2026