

VOR/DME FZT 111.4 Chan 51	APP CRS 121°	Rwy Idg TDZE 678 Apt Elev 678	5006
--	------------------------	---	-------------

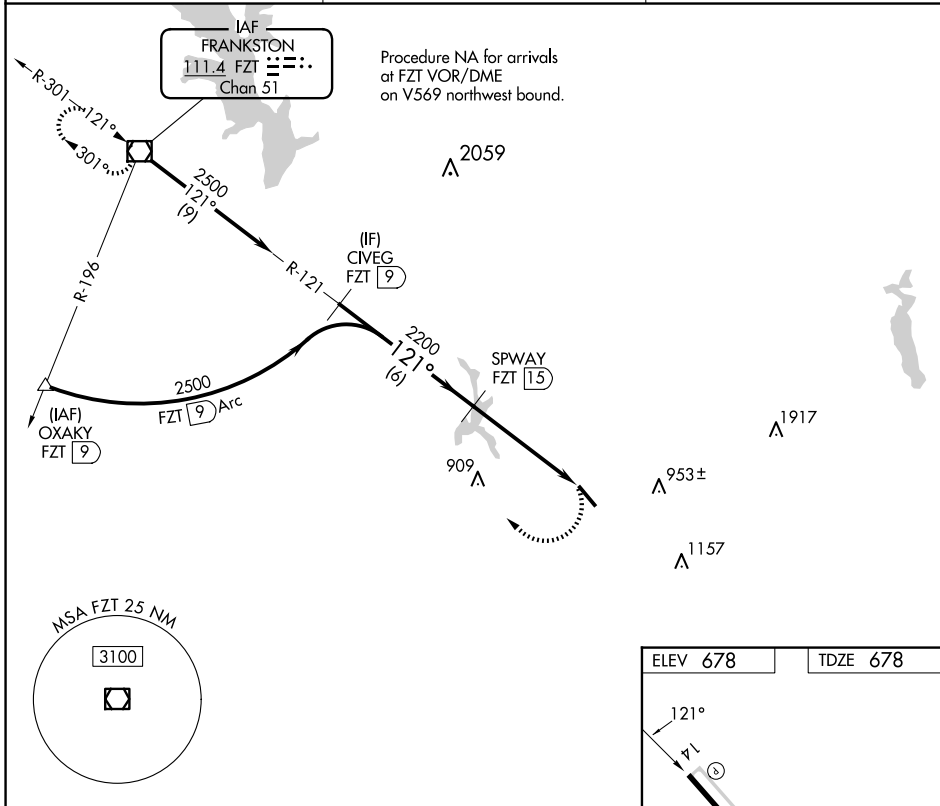
VOR RWY 14

CHEROKEE COUNTY (JSO)

DME required.

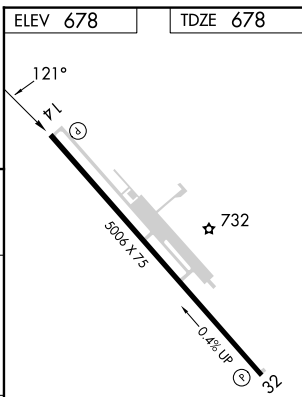
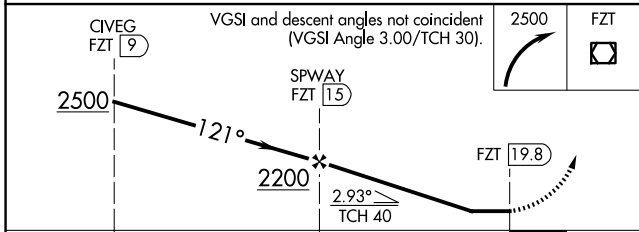
MISSED APPROACH: Climbing right turn to 2500 direct FZT VOR/DME and hold.

AWOS-3 119.075	LONGVIEW APP CON * 128.75 379.15	UNICOM 122.7 (CTAF) 0
--------------------------	--	---------------------------------



SC-5, 16 APR 2026 to 14 MAY 2026

SC-5, 16 APR 2026 to 14 MAY 2026



CATEGORY	A	B	C	D
S-14	1080-1	402 (500-1)	1080-1¼ 402 (500-1¼)	NA
CIRCLING	1080-1 402 (500-1)	1140-1 462 (500-1)	1280-1¾ 602 (700-1¾)	NA

ELEV 678 | TDZE 678

REIL Rwy 14 0
MIRL Rwy 14-32 0